

# 415 CONNECTOR

LA 1/LA 415 Connector Project

SPN H.005121

State Project H.005121  
LA 1 to LA 415 Connector  
Environmental Re-Evaluation  
Public Meeting Transcript  
Submitted January 2023



## Table of Contents

Executive Summary	2
Public Meeting Promotion	3
Public Notices	3
Promotional Flyer	3
Newspaper Advertisements	3
Press Release	3
Email Distributions	3
Public Meeting	4
Public Meeting Attendance	4
Public Comments	4

## *Executive Summary*

State Project H.005121, the LA 1 to LA 415 Connector Environmental Assessment Re-Evaluation, is a project administered by the Louisiana Department of Transportation and Development (DOTD), in cooperation with West Baton Rouge Parish and the Federal Highway Administration (FHWA). The project proposes to develop a connector between Louisiana Highway 1 (LA 1) with LA 415, including a new bridge over the Gulf Intracoastal Waterway (GIWW). The purpose of the proposed project is system linkage in West Baton Rouge Parish, within the Greater Baton Rouge region, and is needed to provide direct connection and relief routes between the existing LA 1 Interstate 10 (I-10) and LA 415.

An Environmental Assessment was completed and a Finding of No Significant Impact (FONSI) received in April 2007. The LADOTD performed a vessel survey in 2017 to assess the necessary bridge height for crossing of the GIWW. With the completion of the vessel survey, changes in scope and footprint, and expansion of development in the project area, LADOTD is reevaluating the EA/FONSI.

Public engagement, and in particular stakeholder engagement, is a critical component of the environmental re-evaluation. Stakeholder engagement is of heightened importance due to development in the project area that occurred since the 2007 EA/ FONSI. Strategic communication, through a variety of mediums, helped the project team identify issues and opportunities and gain support for the plan's recommendations.

The project team's approach to public engagement was outlined in the Agency and Public Involvement Plan, which defined the process by which information would be communicated to the public in conjunction with the project and identified how input from stakeholders and the public would be solicited and considered. The public engagement process began with database development, communications materials development and outbound communications tied to key stakeholder meetings.

In November 2021, January 2022, and March 2022, the project team met with key landowner stakeholders directly impacted by the connector to provide a project overview and to gain input from these stakeholders. During this period, the project team held eight stakeholder meetings with representatives from 10 separate entities to understand and address key concerns. The project team used input provided by these stakeholders in development of the proposed Blue Alternative, which represents a shift and revision in the route approved in the 2007 EA/FONSI. This route was presented to the public in a public meeting held on November 16, 2022, with information presented in the meeting made available to the public on LADOTD's website the following day.

This report documents public outreach efforts made in relation to the LA 1 to LA 415 Connector Environmental Assessment Re-evaluation Public Meeting held on November 16, 2022.

## Public Meeting Promotion

Franklin Associates promoted the November 16, 2022 Public Meeting through public notices in two newspapers, a newspaper display advertisement, flyers distributed in the project area, a published press release, and e-blasts to inform the public of the meeting and to encourage attendance.

### Public Notice

Franklin Associates coordinated the publishing of formal Public Notices to inform the public of the November 16, 2022 Public Meeting. These notices appeared in the West Baton Rouge journal of record, the West Side Journal, on November 3, 2022 and November 10, 2022, both in print and in digital editions in advance of the November 16, 2022 meeting. The public notice also appeared in The Advocate on November 2, 2022 to inform people in the broader affected area. These public notices and proof of their publication can be found in [Appendix A: Public Notices](#).

### Promotional Flyer

Flyers were distributed on October 30, 2022, at the Iberville Chamber of Commerce, the Addis Community Center, and the West Baton Rouge Chamber of Commerce to encourage additional public promotion. A copy of the flyer can be found in [Appendix B: Promotional Flyer](#). This flyer was also used in the print display ad run in the West Side Journal on November 10, 2022.

### Newspaper Advertisements

In addition to the public notices, Franklin Associates also coordinated the publishing of a display advertisement which mirrored the visually designed flyer and appeared in the West Side Journal on November 10, 2022. That advertisement can be found in [Appendix C: Newspaper Advertisement](#).

### Press Release

A copy of the press release distributed to the press prior to the meeting can be found in [Appendix D: Press Release](#).

### Email Distributions

A series of three eblasts were sent out to encourage attendance at the public meeting and went out at the following times:

1. Eblast 1 was sent on October 31, 2022, at 4:15 PM CST.
2. Eblast 2 was sent on November 10, 2022, at 3:03 PM CST.
3. Eblast 3 was sent on November 14, 2022, at 4:28 PM CST.

These eblasts went to a list of 663 contacts in the project database. Additionally, these eblasts went to the West Baton Rouge Chamber of Commerce with a request to further distribute. Copies of the eblasts, along with a screenshot of a report showing the number of email recipients, open rate (the percentage of recipients who opened the email), and the click rate (the percentage of recipients who clicked on a link within the email) can be found in

[Appendix E: Email Distributions](#). The list of email addresses to which the eblasts were sent can be found in [Appendix F: Email Distribution Contact List](#).

## Public Meeting

The LA 1 to LA 415 Connector Public Meeting was held at the Addis Community Center, 7520 Highway 1 South, Addis, LA 70710 on Wednesday, November 16, 2022, from 4:00 to 7:00 PM. The meeting was held open-house style so that the public could come in at the time most convenient to them and could interact with the project team to gain information and ask questions about the project. The public meeting included a pre-recorded presentation that looped continuously throughout the meeting. Guests were asked to sign in upon entering the facility, were provided with a handout, and were then free to view exhibits at their own pace. The meeting included a GIS station that allowed guests to examine the proposed Blue Alternative Route in detail. The meeting also included a LADOTD Real Estate representative who was available to discuss property acquisition, as well as a comment station to allow for public input. The meeting handout can be found in [Appendix G: Public Meeting Handout](#), the presentation slides and script in [Appendix H: Public Meeting Presentation](#), and the meeting exhibits in [Appendix I: Public Meeting Exhibits](#). There were 83 people in attendance at the public meeting, including 44 members of the general public.

## Public Meeting Attendance

Sign in sheets from the public meeting can be found in [Appendix J: Public Meeting Sign In Sheets](#). Meeting attendees were asked to sign in based on their status as an agency member, elected official, member of the media, or member of the public. Attendance figures are shown below.

<u>Attendance Breakdown</u>	
Public	44
Elected Officials	4
Media	1
<u>Agency</u>	<u>35</u>
<b>Total</b>	<b>83</b>

## Comment Process

Franklin Associates set up and staffed a comment station at the November 16 Public Meeting. The station had physical copies of the project comment card, shown in [Appendix K: Public Comments](#). The comment station was positioned near the exit to the Addis Community Center so that guests passed the comment station before exiting the venue. Staff members from Franklin Associates was on hand to encourage guests to comment. Comments were taken at the public meeting, but could also be mailed or emailed. The cutoff date for public comments was November 28, 2022. The comment form, along with submitted comments, can be found in [Appendix M: Public Comments](#).



Appendix A: Public Notices

WEST SIDE JOURNAL • NOVEMBER 3, 2022 Page 5B **Bids, Notices**

**ADVERTISEMENT FOR BID  
PARKS AND RECREATION, SYNTHETIC TURF FIELDS REBID**

Sealed bids will be received by the West Baton Rouge Parish Government, not later than 2:00 p.m., Thursday, November 17, 2022, at the following address:

**West Baton Rouge Parish Government  
880 North Alexander Avenue  
Port Allen, LA 70767**

A non-mandatory Pre-bid Conference will be held at 2:00 p.m., November 3, 2022, at West Baton Rouge Parish Government Office at 880 North Alexander Avenue, Port Allen, LA 70767. The bids will be opened at the West Baton Rouge Parish Government Office immediately following the close of bid time on the above noted date.

It is the policy of the West Baton Rouge Parish Government to provide equal opportunities without regard to race, color, national origin, sex, age, disabilities, or veteran status in educational programs and activities. This includes, but is not limited to, admissions, educational services financial aid and employment.

The intent is for the project to be awarded at the December 15, 2022 Parish Council Meeting. The anticipated construction start date is January 9, 2023.

**WEST BATON ROUGE PARISH GOVERNMENT  
By Riley J. Bouchard, Jr.  
Parish President**

*Bids October 20, 2022; October 27, 2022 & November 1, 2022*

**NOTICE**

The dates of the West Baton Rouge Parish School Board Committee meeting and regular board meeting for November are listed below:

**Committee Meeting:** Wednesday, November 9, 2022

**Regular Board Meeting:** Wednesday, November 16, 2022

**G. Alden Chute Jr.  
President  
West Baton Rouge School Board**

*Published: October 27, 2022 & November 1, 2022*

**NOTICE TO BIDDERS  
SERVICES**

Sealed bids will be received by the Procurement Section of the Office of Administration, room N, and N, 2nd Floor, Suite 100, East Baton Rouge, Louisiana, at noon A.M. for the following:

**Item No. 000000001 - Library Items for DDC/PLC, etc/1/22**

Bid proposal items, information and specifications may be obtained by contacting the bid number to call the attention to the location, pricing or from the procurement section/office. Bids will be received until the date and hour specified. The right is reserved to reject any and all bids and to waive any irregularities.

**Tim Galtier  
Director of State Procurement  
R12, 2201 McNeil**

**PUBLIC NOTICE**

THE WEST BATON ROUGE SHERIFF'S OFFICE WILL ACCEPT SEALED BIDS UNTIL, YOGAN FRIDAY NOVEMBER 18, 2022 FOR THE PURCHASE OF THE FOLLOWING:

**ONE (1) 2021 CHEVROLET SILVERADO 1500  
BLACK CUSTOM TRUCK OPTION AND CHROME GRILL  
USED LOW MILEAGE UNDER 10,000**

BIDS MUST BE MAILED TO PO BOX 129 PORT ALLEN, LA 70767 OR DELIVERED TO ROOM 110 OF THE INDIAN COURTHOUSE 805 8TH STREET AND THE DEVELOPER CLEARLY MARKED SEALED BID SILVERADO 1500 NOT TO BE OPENED UNTIL, FRIDAY NOVEMBER 18, 2022. ATTENTION: HUNTER BENOARD

DETAILS MAY BE OBTAINED THROUGH 18 OF THE INDIAN COURTHOUSE. THE SHERIFF RESERVES THE RIGHT TO REJECT ANY AND OR ALL BIDS AND TO WAIVE FORMALITIES.

**RICHARD H. GARDER, SHERIFF  
WEST BATON ROUGE PARISH**

*advertise NOVEMBER 3 & NOVEMBER 10, 2022*

**Advertising in this newspaper or giving your firm the benefit of...**

**West Baton Rouge Parish School Board**

A search for exceptional children is being conducted by the West Baton Rouge Parish School Board.

Child Search is an ongoing attempt to find students who have problems learning or reaching educational goals at normal rate. The exceptional students are those who are experiencing problems such as: impaired sight or hearing, speech and language disorders, emotional disturbance, autism, orthopedic conditions, learning disabilities, traumatic brain injuries and multiple disabilities.

Identified gifted and talented students are also eligible for special services.

By locating and identifying such students, the school system is able to inform parents of services that might be available to them. Such services often make the difference between achievement and non-achievement of a child. West Baton Rouge Parish provides educational services to all exceptional students from K to 12th grade. For additional information, call the School Board Office at 225-343-2039 and ask for the Special Education Department.

**Call today  
343-2540**

**NOTICE OF PUBLIC HEARING  
Rezone & Special Use Permit Request  
Major Plan Change**

**Request:** Rezone R-SF-3 to AG-1 with a Special Use Permit for Agricultural sales and services.

**Address:** 5937 Lakeville Economic Rowdy LA 70719

**Applicant:** Sidney Vaughn Sr.

**Owner:** Joseph and Sarah Gibson

**Property Description:** File #2022-22 as described by the WBR Assessor TRACT MEAS 83'X 300' IN SEC 20 T8S R12E

**A PUBLIC HEARING will be held by the West Baton Rouge Zoning Commission relative to the rezoning requests.**  
**Date:** Tuesday November 8, 2022 **Time:** 5:30pm

**A PUBLIC HEARING will be held by the West Baton Rouge Parish Council relative to the rezoning requests.**  
**Date:** Thursday November 17, 2022 **Time:** 5:30pm

Public hearings will be held at the West Baton Rouge Parish Governmental Building, 880 N. Alexander, Port Allen, LA 70767

*See Times (3) Times, 10/26/2022, 10/27/2022 & 11/3/2022*

**PUBLIC HEARING NOTICE  
REQUEST FOR SUBDIVISION OF PROPERTY**

THE OWNER OF PROPERTY LOCATED AT 7534 HIGHWAY 1 SOUTH IN ADDIS, LOUISIANA HAS FILED AN APPLICATION FOR SUBDIVISION OF PROPERTY. LEGAL DESCRIPTIONS:

LOT 9 RENO ACRES SD CONT 1.91 AC 48C-10 CII290 E1(MB2 193)

THE PLANNING AND ZONING COMMISSIONERS WILL HOLD A PUBLIC HEARING ON THIS REQUEST ON NOVEMBER 15, 2022 AT 6:00 P.M. AT THEIR REGULAR MEETING AT THE ADDIS MUNICIPAL CENTER.

THE TOWN OF ADDIS MAYOR AND TOWN COUNCIL WILL HOLD A PUBLIC HEARING ON THIS REQUEST ON DECEMBER 07, 2022 AT 6:00 P.M. AT THEIR REGULAR MEETING AT THE ADDIS MUNICIPAL CENTER.

ALL INTERESTED PARTIES ARE INVITED TO COMMENT AND EXPRESS THEIR VIEWS ON THIS REQUESTED CHANGE.

**ROBERT HERBERT** CHAIRPERSON  
**DAVID H. TOU/PS** MAYOR  
**PLANNING & ZONING COMMISSION** TOWN OF ADDIS

*FOR MORE INFO, SEE:*

**Notice of Public Meeting  
LA 1 to LA 415 Connector Project  
SPN: H.005121**

The Louisiana Department of Transportation and Development (DOTD) and the LA 1 to LA 415 Connector Project Team will host an open house style public meeting to provide the public with information regarding the Connector.

A prerecorded presentation of information relative to the LA 1 to LA 415 Connector will be available at the meeting and will loop throughout the meeting. An open house with information stations and representatives of the DOTD and project team will be available to answer questions relative to this project throughout the meeting period.

All interested parties are invited to participate in the meeting. The scheduled date, time, and location is provided below.

**Wednesday, November 16, 2022  
4:00 p.m. to 7:00 p.m.  
Addis Community Center  
7520 Highway 1 South, Addis, LA 70710**

After the meeting, information shared onsite will be posted to the project website at [https://www.spn.gov/la/administration/public\\_info/projects/homepage?key=140](https://www.spn.gov/la/administration/public_info/projects/homepage?key=140). Written and verbal comments will be accepted during the meeting for consideration by the project team. Written comments can also be submitted after the meeting, mailed to the address shown below, or submitted via email to [415connector@spn.com](mailto:415connector@spn.com). All comments received or postmarked no later than Monday, November 28, 2022, will be included in the meeting transcript.

Should a member of the public require an interpreter or special assistance due to a disability to participate in this meeting, please contact the project team by telephone at 225-768-9060 or at 415connector@spn.com at least five working days prior to the meeting.

**LA 1 to LA 415 Connector Project  
250 S. Foster Drive  
Baton Rouge, LA 70806**

*By: 11-03-22 at 11:10:22*

Public Notice, West Side Journal, November 3, 2022

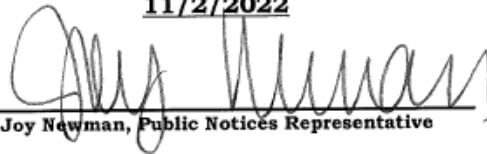
# CAPITAL CITY PRESS

**Publisher of  
THE ADVOCATE**

## PROOF OF PUBLICATION

The hereto attached notice was published in  
**THE ADVOCATE**, a daily newspaper of  
general circulation within Louisiana, and the  
Official Journal of the State of Louisiana, City  
of Baton Rouge, and Parish of East Baton  
Rouge, or published daily in **THE TIMES-  
PICAYUNE/THE NEW ORLEANS ADVOCATE**,  
in New Orleans, Louisiana, or published daily  
in **THE ACADIANA ADVOCATE** in

11/2/2022



---

Joy Newman, Public Notices Representative

Sworn and subscribed before me by the person  
whose signature appears above

11/29/2022



---

M. Monic McChristian,  
Notary Public ID# 88293  
State of Louisiana  
My Commission Expires: Indefinite

FRANKLIN ASSOCIATES, LLC 250 S Foster Dr Baton Rouge, LA 70806-4103	#11542
---	--------



**Notice of Public Meeting**  
LA 1 to LA 415 Connector Project  
SPN: H.005121

The Louisiana Department of Transportation and Development (DOTD) and the LA 1 to LA 415 Connector Project Team will host an open house-style public meeting to provide the public with information regarding the Connector.

A prerecorded presentation of information relative to the LA 1 to LA 415 Connector will be available at the meeting and will loop throughout the meeting. An open house with information stations and representatives of the DOTD and project team will be available to answer questions relative to this project throughout the meeting period.

All interested parties are invited to participate in the meeting. The scheduled date, time, and location is provided below.

**Wednesday, November 16, 2022**  
4:00 p.m. to 7:00 p.m.  
Addis Community Center  
7520 Highway 1 South, Addis, LA 70710

After the meeting, information shared onsite will be posted to the project website at [http://wwwapps.dotd.la.gov/administration/public\\_info/projects/home.aspx?key=140](http://wwwapps.dotd.la.gov/administration/public_info/projects/home.aspx?key=140). Written and verbal comments will be accepted during the meeting for consideration by the project team. Written comments can also be submitted after the meeting, mailed to the address shown below, or submitted via email to [415connector@gmail.com](mailto:415connector@gmail.com). All comments received or postmarked no later than Monday, November 28, 2022, will be included in the meeting transcript.

Should a member of the public require an interpreter or special assistance due to a disability to participate in this meeting, please contact the project team by telephone at 225-768-9060 or at [415connector@gmail.com](mailto:415connector@gmail.com) at least five working days prior to the meeting.

LA 1 to LA 415 Connector Project  
250 S. Foster Drive  
Baton Rouge, LA 70806

11542-31573 Nov 2 1t

*Public Notice, The Advocate, November 3, 2022*



# Bids, Notices

PAGE 8 NOVEMBER 10, 2022 • West Side Journal

## ADVERTISEMENT FOR BIDS

**City of Port Allen** (herein referred to as the "Owner") hereby solicits sealed bids for the **Pump Station Generators** project described as follows:

**STATEMENT OF WORK:** *Installation of generators at three City pump stations. PEC Project No. 11654.05*

Sealed Bids shall be addressed to the **City of Port Allen**, and delivered to the **Port Allen City Hall, 375 Court Street (Post Office Box 468), Port Allen, LA 70767**, not later than **2:00 p.m.**, on the **1st** day of **December, 2022**. Any bid received after the specified time and date will not be considered. The sealed bids will be publicly opened and read aloud at **2:00 p.m. on the 1st day of December, 2022**, at the **Port Allen City Hall** located at **375 Court Street, Port Allen LA, 70767**.

The Owner has chosen the method of plan distribution to be via hard copies of the plans and specifications pursuant to LA R.S. 38:2212 as available through the office of the Engineer.

The Instructions to Bidders, Bid Form, Contract, Plans, Specifications, and Forms of Bid Bond, Performance Bond and Payment Bond, and other bidding documents may be examined at the Office of the Engineer for the contract; **Professional Engineering Consultants Corp.**, located at **7600 Innovation Park Drive, Baton Rouge, LA 70820; (225-769-2810)**. Copies shall be obtained at this office upon payment of a deposit of \$150.00. This deposit will be refunded upon request in accordance with R.S. 38:2212. Validation of the Contractor's license and classifications will be made prior to release of bid documents.

Contractors submitting bids shall be licensed under LA R.S. 37:2150-2164, **Municipal and Public Works**. The bidder shall show his license number on the bid and on the sealed envelope submitting the bid.

The Owner reserves the right to reject any and all bids for just cause; such actions will be in accordance with Title 38 of the Louisiana Revised Statutes.

In accordance with R.S. 38:2212 (A)(1)(b), the provisions and requirements stated in the Bidding Documents shall not be waived by any entity.

Each Bidder must deposit with his/her bid, security in the amount of at least five percent (5%) of the total bid price, provided on the specified form and subject to the conditions provided in the Information for Bidders. Sureties used for obtaining bonds must appear as acceptable on the U. S. Department of Treasury Circular 570.

No bidder may withdraw his/her bid within forty-five (45) days after the actual date of the opening thereof.

**OWNER**  
**CITY OF PORT ALLEN**

BY: /s/ RICHARD N. LEE, III, MAYOR

*RLN: November 3, 10, and 17, 2022*

## PUBLIC NOTICE

THE WEST BATON ROUGE SHERIFFS OFFICE WILL ACCEPT SEALED BIDS UNTIL 10:00 AM FRIDAY NOVEMBER 18, 2022 FOR THE PURCHASE OF THE FOLLOWING:

ONE(1) 2021 CHEVROLET SILVERADO 1500  
BLACK CUSTOM TRAIL BOSS 4X4 CREW CAB 5.75  
USED LOW MILEAGE UNDER 10,000

BIDS MUST BE MAILED TO PO BOX 129 PORT ALLEN, LA 70767 OR DELIVERED TO ROOM 15 IN THE PARISH COURTHOUSE 850 8TH STREET AND THE ENVELOPE CLEARLY MARKED SEALED BID SILVERADO 1500 NOT TO BE OPENED UNTIL FRIDAY NOVEMBER 18, 2022 . ATTENTION HUNTER BERAUD

DETAILS MAY BE OBTAINED IN ROOM 15 OF THE PARISH COURTHOUSE. THE SHERIFF RESERVES THE RIGHT TO REJECT ANY AND OR ALL BIDS AND TO WAIVE FORMALITIES.

MICHAEL B. CAZES, SHERIFF  
WEST BATON ROUGE PARISH

*schw/9a NOVEMBER 3 & NOVEMBER 10, 2022*

## Notice of Public Meeting LA 1 to LA 415 Connector Project SPN: H.005121

The Louisiana Department of Transportation and Development (DOTD) and the LA 1 to LA 415 Connector Project Team will host an open house-style public meeting to provide the public with information regarding the Connector.

A prerecorded presentation of information relative to the LA 1 to LA 415 Connector will be available at the meeting and will loop throughout the meeting. An open house with information stations and representatives of the DOTD and project team will be available to answer questions relative to this project throughout the meeting period.

All interested parties are invited to participate in the meeting. The scheduled date, time, and location is provided below.

**Wednesday, November 16, 2022**  
4:00 p.m. to 7:00 p.m.  
Addis Community Center  
7520 Highway 1 South, Addis, LA 70710

After the meeting, information shared onsite will be posted to the project website at [http://wwwapps.dotd.la.gov/administration/public\\_info/projects/home.aspx?key=140](http://wwwapps.dotd.la.gov/administration/public_info/projects/home.aspx?key=140). Written and verbal comments will be accepted during the meeting for consideration by the project team. Written comments can also be submitted after the meeting, mailed to the address shown below, or submitted via email to [415connector@gmail.com](mailto:415connector@gmail.com). All comments received or postmarked no later than Monday, November 28, 2022, will be included in the meeting transcript.

Should a member of the public require an interpreter or special assistance due to a disability to participate in this meeting, please contact the project team by telephone at 225-768-9060 or at [415connector@gmail.com](mailto:415connector@gmail.com) at least five working days prior to the meeting.

LA 1 to LA 415 Connector Project  
250 S. Foster Drive  
Baton Rouge, LA 70806

*R: 11-03-22 & 11-10-22*

## PUBLIC HEARING NOTICE

### REQUEST FOR REZONING & SUBDIVISION OF PROPERTY

THE OWNER OF PROPERTY LOCATED IN ADDIS, LOUISIANA HAS FILED AN APPLICATION FOR SUBDIVISION OF PROPERTY. LEGAL DESCRIPTION: TRACT B CONT 9.666 AC IN SEC 23 T8S R12E 47-308 MB4 E556, 348A WEST OF THE MISSISSIPPI RIVER, TOWN OF ADDIS, WEST BATON ROUGE PARISH, LOUISIANA.

THE TOWN OF ADDIS PLANNING AND ZONING COMMISSION WILL HOLD A PUBLIC HEARING ON THIS REQUEST ON DECEMBER 20, 2022 AT 6:00 P.M. AT THE REGULAR MEETING AT THE ADDIS MUNICIPAL CENTER.



Public Notice, West Side Journal, November 10, 2022

Appendix B: Promotional Flyer



# COMMUNITY OPEN HOUSE MEETING

THE LA 415 CONNECTOR  
PROPOSES TO CONNECT  
LA 415 TO LA 1.

COME FIND OUT MORE  
ABOUT THE PROJECT  
AND SHARE YOUR  
THOUGHTS!

**ADDIS COMMUNITY CENTER**  
**7520 HIGHWAY I SOUTH, ADDIS, LA 70710**  
**WEDNESDAY, NOVEMBER 16, 2022 | 4-7 PM**

Information will be presented open house style, with a brief recorded presentation on loop, so you can arrive at your convenience within the hours of 4-7 PM.

*WE LOOK FORWARD TO SEEING YOU THERE!*



Appendix C: Newspaper Advertisement

# Local

Page 2 NOVEMBER 10, 2022 • WEST SIDE JOURNAL

## Work to begin soon on renewable energy plant

Steve Karczer  
skarczer@westsidejournal.com

Construction is expected to begin soon on a \$740 million renewable energy plant south of Flagtown that got final approval from the state earlier this year.

Work on the natural gas-powered generation plant that the Louisiana Public Service Commission approved earlier this year could begin in the first quarter of next year, Iberville Parish President J. Mitchell Orso said.

The 2022 Agreement the PSC approved in January got the whole in motion for Pinetown, New Jersey-based Kinidie Energy to locate in Iberville Parish.

Kinidie has an option on 50 acres of privately owned property where it plans to build a plant along River Road between SNF Flaport and Shinnick.

The Kinidie Energy

pp-Magnolia Power LLC Project will create between 500 and 600 construction jobs and provide between 20 and 25 permanent jobs.

Anticipated startup date is 2025.

The \$1.3 billion plant last week will allow cooperative to buy power from out-of-state utility companies.

The 700-megawatt advanced class combined cycle will serve Louisiana customers under a stable long-term contract.

The facility will be capable of using 50 percent hydrogen for fuel on day one, according to Kinidie.

The plant will utilize the latest natural gas turbine technology.

Kinidie also manages and operates nearly 4.5 Gigawatts of generation located in Texas, Ohio and Indiana, capable of powering approximately 3.7 million homes.

The plans moved forward after two years of discussion between Kinidie and Iberville Parish officials.

The geographic location along the Mississippi River continues to help parish tax revenues, Orso said.

"It makes our jobs much easier here in giving opportunities for our people to have employment and to generate tax revenue for us to serve our people with roads and drainage and schools to the children of our parish," Orso said. "All of the activities throughout our parish benefit from that, whether you're from White Castle or Metairie or wherever... everyone benefits from the tax base here."

Work on the facility comes during a period of industrial growth in the region, which has Orso's expansion of facilities in Iberville and West

Baton Rouge parishes.

On the Iberville, a facility in St. Gabriel is one of two Louisiana companies that were awarded \$300 million in U.S. Department of Energy funding last month from the Bipartisan Infrastructure Law (BIL) to expand manufacturing of electric vehicle battery components.

Kinidie has been awarded \$100 million to build the first U.S. manufacturing plant for lithium hexafluoro-phosphate (LiPF6) on the grounds of the company's existing site in St. Gabriel.

The new plant is expected to create up to 30 new jobs.

Meanwhile, the Iberville Parish School Board and St. Gabriel City Council approved ETJRs for the Kora project, as well as a fertilizer plant on the Iberville/Orion line between St. Gabriel and Orleans.

## IN HONOR OF THOSE WHO SERVED



Nubia Darvell Hall  
U.S. ARMY  
1974-1976



Michael J. Allaman  
U.S. Army  
1948-1970

## Iberville Veterans Day celebration set for Friday

Steve Karczer  
skarczer@westsidejournal.com

Parish President J. Mitchell Orso, the Iberville Parish Council and other entities plan to make the 2022 Veterans celebration the biggest ceremony the parish has ever organized for the men and women who have served in the U.S. military.

An address from keynote speaker Gov. John Bel Edwards will highlight the Veterans Day activities, which will begin at 10 a.m. in front of Iberville Parish's \$2 million Veterans Memorial and Vietnam Helicopter display at 225400 Railroad Avenue in Flagtown. The event will be moved to the Carl Olson Civic Center in Flagtown in the event of rain.

Other features include performances by Louisiana country singer David St. Roman, a rife drill by the 307th Infantry, the top ROTC drill team in the state, military Color Guard units, the Marine Corps Reserve Band, a performance by Baton Rouge Pipe Band, Orangeburg glee, and the collection of supplies for our military.

The Iberville Wall of Veterans, which now includes the photos of over 2,000 Westside veterans, will be on display, and always done a crowd. It will remain on display until after the holidays. The Iberville Soldiers to Veterans is in its 14th year and is sponsored by Iberville Parish President J. Mitchell Orso Jr. and the Iberville Parish Council.

The event and judging are free. Supplies for active military personnel are welcome and will be collected. This is organized by St. John School students, who collect and package the supplies for shipment to troops. The following are suggested supplies: Lip Balm, Medicinal foot powder, Shoe inserts, Athletic cream, Anti-bitch ointment, Mosquito repellent, Eye Drops, Eye-glasses wipes, Mouthwash, toothpaste, Deodorant (non-aerosol), Minibars toilet paper rolls, Feminine hygiene products, Shaving cream, Disposable razor, Body wash/shampoo, Baby wipes, Shampoo, Scrubbing, Q-tips, Hand sanitizer, Skin lotion, Swabs, Cotton buds, Band-aids, Band-aids (non-aerosol), Hand warmers, T-shirt, Piggyback, Cuddly socks, Hot chocolate, Powdered drink mixes for individual water bottles, Powdered Citrusade, Coffee/tea, Hand jelly (no pink), Sun stick, Chewing gum, Cinnamon candies, Room deodorant, Peanut/peas, Small notebooks.

For more information go

## Republicans decry party executive committee's early endorsement of Landry

Victor Skinner  
The Center Square

Some Louisiana Republicans are annoyed off after the party's executive committee voted over the weekend to endorse Attorney General Jeff Landry's bid for governor in 2023.

The Louisiana Republican Party's executive committee voted to endorse Landry over the weekend at the urging of Republican evangelist Eddie Rapone, who has his bid to succeed Gov. John Bel Edwards in 2026.



Louisiana Attorney General Jeff Landry holds a news conference Thursday, March 4, 2021. David Jacoby/TXN The Center Square

Rapone joined with former Congressman Ralph Abraham, who also ran for governor in 2019, to endorse Landry and encourage his fellow Republicans to follow suit in an email last week.

Rapone and Abraham agreed with critical for Republicans to rally behind a single candidate to win in 2023.

"Considering those that have indicated they will run, I have decided to support Jeff Landry," Rapone wrote in the email last week to GOP members. "I encourage other (Republican State Central Committee) members to consider doing the same, so we can start organizing ourselves around the state to elect"

the election of a strong conservative governor."

The vote to endorse Landry ignited immediate backlash from both RSCC members and prominent state Republicans considering a bid for governor next year.

"I get wind of tonight's clandestine meeting right as it was apparently set to begin and the vote was 60-40," RSCC member Michael DiBartino wrote to The Advocate in an email. "For a party that's been hating for two years about election integrity and hearing the will of all legitimate voters, tonight's action by the state GOP executive committee is like yesterday's degen."

"I have no bones yet in

our party. I predict it will be 60-40."

State Sen. Silvan Smith, R-5144, a potential 2023 gubernatorial candidate, responded to the endorsement on Twitter Sunday.

"The citizens of Louisiana do not need backroom deals and political insiders telling them who should be our next Governor," he wrote. "They are fully capable of deciding this themselves."

Republican Lt. Gov. Bill Nguyen, who is expected to join the governor's race, also took to Twitter to condemn the endorsement.

"There is nothing more conservative, nothing more (glory, then corruption)," he posted Monday. "The endorsement process looks more like communist China than the Louisiana we know and love. Some think this is a coronation. Real republicans will make sure we have an election, not a coronation."

Old profession, new technology.

Read the e-edition!

The West Side Journal  
www.thewestsidejournal.com

415 CONNECTOR  
LA 1 to LA 415 Connector Project

THE LA 415 CONNECTOR PROPOSES TO CONNECT LA 415 TO LA 1.

COME FIND OUT MORE ABOUT THE PROJECT AND SHARE YOUR THOUGHTS!

ADDIS COMMUNITY CENTER  
7520 HIGHWAY I SOUTH, ADDIS, LA 70710  
WEDNESDAY, NOVEMBER 16, 2022 | 4-7 PM

Information will be presented open house style, with a brief recorded presentation on loop, so you can arrive at your convenience within the hours of 4-7 PM.

WE LOOK FORWARD TO SEEING YOU THERE!

## Appendix D: Press Release



### NEWS

---

#### **Public Open House Announced for LA 1 to LA 415 Connector Project**

**Baton Rouge** – The Louisiana Department of Transportation and Development (DOTD) announces a public open house meeting for the LA 1 to LA 415 Connector Project (State Project No. H.005121). The meeting will be held at the Addis Community Center at 7520 Highway 1 South, Addis, LA 70710 on Wednesday, November 16, 2022, from 4:00 to 7:00 PM.

This project proposes connecting LA 415 to LA 1 south of Interstate 10 within West Baton Rouge Parish. At the meeting, project staff will be present to offer information about the proposed route of the future connector. A prerecorded presentation providing an overview of the project, maps, and conceptual images of what the road will look like will be on display to inform attendees of current plans. The open house meeting allows area residents and interested parties to drop in at any time between 4:00 and 7:00 PM.

Comments may be submitted either at the open house meeting or sent by mail to 415 Connector Project, c/o Franklin Associates, 250 S. Foster Dr., Baton Rouge, LA 70806 or via email to [415connector@gmail.com](mailto:415connector@gmail.com). All comments received or postmarked no later than Monday, November 28, 2022, will be included in the meeting transcript.

After the meeting, information shared onsite will be posted to the project website at [http://wwwapps.dotd.la.gov/administration/public\\_info/projects/home.aspx?key=140](http://wwwapps.dotd.la.gov/administration/public_info/projects/home.aspx?key=140).

Should a member of the public require an interpreter or special assistance due to a disability to participate in this meeting, please contact the project team by telephone at 225-768-9060, by email at [415connector@gmail.com](mailto:415connector@gmail.com), or at the address above, at least five working days prior to the meeting.

---

The Louisiana Department of Transportation and Development (DOTD) is committed to delivering transportation and public works systems that enhance the quality of life. In addition to more than 16,600 miles of roadway, including over 890 miles of interstate, DOTD supports the development of the state's aviation, marine and rail infrastructures. Through this work, we are able to facilitate economic development, create job opportunities, improve vital evacuation





routes, and make critical freight corridors safer and more efficient.

For more information, please visit [www.dotd.la.gov](http://www.dotd.la.gov), email [dotdcs@la.gov](mailto:dotdcs@la.gov), or call DOTD's Customer Service Center at [\(225\) 379-1232](tel:(225)379-1232) or 1-877-4LADOTD ([1-877-452-3683](tel:1-877-452-3683)). Business hours are 7:30 a.m. - 5 p.m., Monday through Friday. Please let us know how we may better serve you: [Customer Service Survey](#).

---

## Appendix E: Email Distributions



### LA 415 Connector Community Open House Meeting

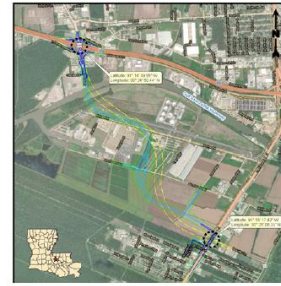
The Louisiana Department of Transportation and Development invites you to attend an open-house style public meeting at the Addis Community Center on Wednesday, November 16 to provide information on the LA 1 to LA 415 Connector.

Addis Community Center  
7520 Highway 1 South, Addis, LA 70710  
Wednesday, November 16, 2022 | 4:00 to 7:00 PM

Information will be presented *open house style*, with a *brief recorded presentation on loop*, so you can arrive at your convenience within the hours of 4-7 PM.

The LA 415 Connector will provide a direct link between LA 415 and LA 1 south of Interstate 10 within West Baton Rouge Parish. [Click here](#) to learn more about the Connector.

At the meeting, project staff will be present to offer information about the proposed route of the future connector. A prerecorded presentation providing an overview of the project, maps, and conceptual images of what the road will look like will be on display to inform attendees of current plans.



**Come learn more about the project and share your thoughts! We look forward to seeing you there!**

DOTD representatives and the LA 415 project team will be on hand at the meeting to share further details, answer your questions, and hear any thoughts or concerns you may have regarding the Connector. Comments may be submitted either at the open house meeting or sent by mail to:

415 Connector Project  
c/o Franklin Associates  
250 S. Foster Dr.  
Baton Rouge, LA 70806

Comments may also be submitted via email to [415connector@gmail.com](mailto:415connector@gmail.com). All comments received or postmarked no later than Monday, November 28, 2022, will be included in the meeting transcript. After the meeting, information shared onsite will be posted to the [project website](#).

Should you require an interpreter or special assistance to participate in this meeting due to a disability, please contact the project team at [415connector@gmail.com](mailto:415connector@gmail.com), at the address above, or by telephone at 225-768-9060, at least five working days prior to the meeting.



[Our Company](#) | [Contact Us](#) | [FAQs](#) | [Privacy Policy](#)

*Screenshot of Eblast 1, sent October 31, 2022, at 4:15 PM CST*

Sent LA 415 Connector Eblast Copy Share on Social ...

Details Reporting Heat Map

### Email Performance

See how your emails are doing with your audience. [Compare your results to the industry average.](#)

Sent	Open Rate	Click Rate
<b>619</b>	<b>38.5%</b>	<b>6.8%</b>

Opens	225	Clicks	40
Sent	619	Did Not Open	360
Bounces	34	Unsubscribed	0
Successful Deliveries	585	Spam Reports	0
Desktop Open Percentage	90.9%	Mobile Open Percentage	9.1%

*Report on Eblast 1*





**LA1/ LA 415 Connector Community Open House Meeting**

The Louisiana Department of Transportation and Development invites you to attend an open-house style public meeting at the Addis Community Center on Wednesday, November 16 to provide information on the LA 1 to LA 415 Connector.

Addis Community Center  
7520 Highway 1 South, Addis, LA 70710  
Wednesday, November 16, 2022 | 4:00 to 7:00 PM

Information will be presented open house style, with a brief recorded presentation on loop, so you can arrive at your convenience within the hours of 4-7 PM.

The LA 415 Connector will provide a direct link between LA 415 and LA 1. You can [click here](#) to learn more about the Connector.



DOTD representatives and the LA 415 project team will be on hand at the meeting to share further details, answer your questions, and hear any thoughts or concerns you may have regarding the Connector.

**Come learn more about the project and share your thoughts! We look forward to seeing you there!**

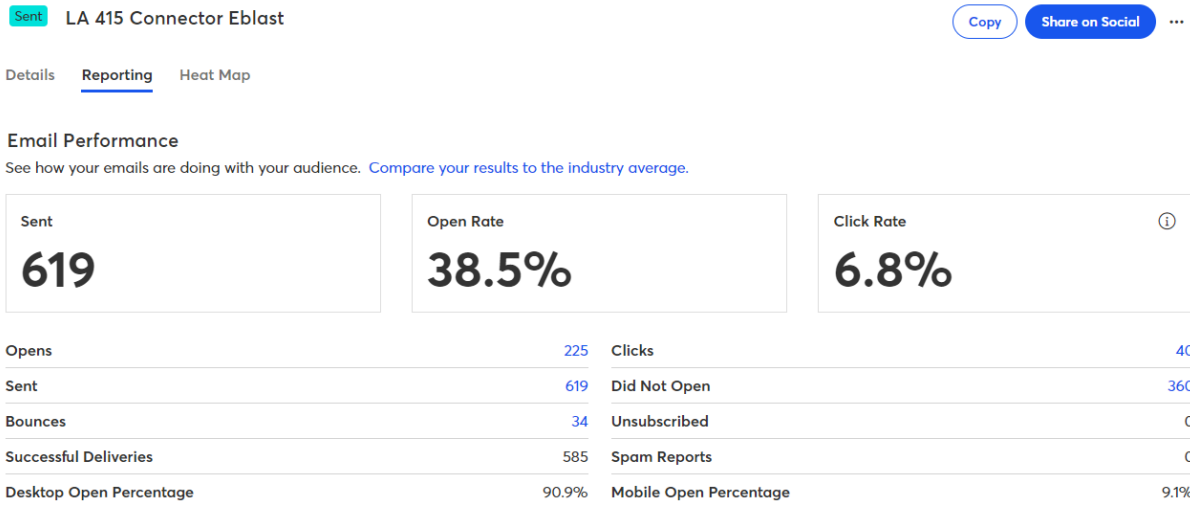
Comments may be submitted either at the open house meeting or sent by mail to:

415 Connector Project  
c/o Franklin Associates  
250 S. Foster Dr.  
Baton Rouge, LA 70806

Comments may also be submitted via email to [415connector@gmail.com](mailto:415connector@gmail.com). All comments received or postmarked no later than Monday, November 28, 2022, will be included in the meeting transcript. After the meeting, information shared onsite will be posted to the [project website](#).

Should you require an interpreter or special assistance to participate in this meeting due to a disability, please contact the project team at [415connector@gmail.com](mailto:415connector@gmail.com), at the address above, or by telephone at 225-768-9060, at least five working days prior to the meeting.

*Screenshot of Eblast 2, sent November 10, 2022, at 3:03 PM CST*



*Report on Eblast 2*



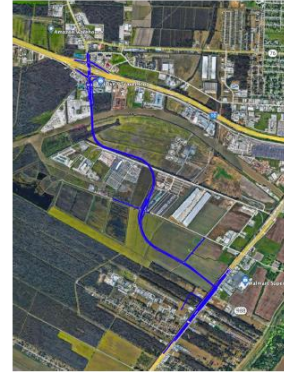
**LA1/ LA 415 Connector Community Open House Meeting**

The Louisiana Department of Transportation and Development invites you to attend an open-house style public meeting at the Addis Community Center on Wednesday, November 16 from 4 to 7 PM to provide information on the LA 1 to LA 415 Connector.

Addis Community Center  
7520 Highway 1 South, Addis, LA 70710  
Wednesday, November 16, 2022 | 4:00 to 7:00 PM

Information will be presented open house style, with a brief recorded presentation on loop, so you can arrive at your convenience within the hours of 4-7 PM.

The LA 415 Connector will provide a direct link between LA 415 and LA 1. You can [click here](#) to learn more about the Connector.



DOTD representatives and the LA 415 project team will be on hand at the meeting to share further details, answer your questions, and hear any thoughts or concerns you may have regarding the Connector.

**Come learn more about the project and share your thoughts! We look forward to seeing you there!**

Comments may be submitted either at the open house meeting or sent by mail to:

415 Connector Project  
c/o Franklin Associates  
250 S. Foster Dr.  
Baton Rouge, LA 70806

Comments may also be submitted via email to [415connector@gmail.com](mailto:415connector@gmail.com). All comments received or postmarked no later than Monday, November 28, 2022, will be included in the meeting transcript. After the meeting, information shared onsite will be posted to the [project website](#).

Should you require an interpreter or special assistance to participate in this meeting due to a disability, please contact the project team at [415connector@gmail.com](mailto:415connector@gmail.com), at the address above, or by telephone at 225-768-9060, at least five working days prior to the meeting.

*Screenshot of Eblast 3, sent November 14, 2022, at 4:28 PM CST*

**Sent** LA 415 Connector Eblast 3 Copy Share on Social ...

Details Reporting Heat Map

**Email Performance**  
See how your emails are doing with your audience. [Compare your results to the industry average.](#)

<b>Sent</b> <b>663</b>	<b>Open Rate</b> <b>35%</b>	<b>Click Rate</b> <b>2.1%</b>
---------------------------	--------------------------------	----------------------------------

<b>Opens</b>	214	<b>Clicks</b>	13
<b>Sent</b>	663	<b>Did Not Open</b>	397
<b>Bounces</b>	52	<b>Unsubscribed</b>	0
<b>Successful Deliveries</b>	611	<b>Spam Reports</b>	0
<b>Desktop Open Percentage</b>	94.6%	<b>Mobile Open Percentage</b>	5.4%

*Report on Eblast 3*

[Sent](#) LA 415 Connector Eblast 4

[Copy](#) [Share on Social](#) ...

[Details](#) [Reporting](#) [Heat Map](#)

### Email Performance

See how your emails are doing with your audience. [Compare your results to the industry average.](#)

Sent <b>663</b>	Open Rate <b>37.1%</b>	Click Rate <b>2.3%</b>
--------------------	---------------------------	---------------------------

Opens	227	Clicks	14
Sent	663	Did Not Open	385
Bounces	51	Unsubscribed	0
Successful Deliveries	612	Spam Reports	0
Desktop Open Percentage	91.4%	Mobile Open Percentage	8.6%

*Report on Eblast 3 Correction*

Appendix F: Email Distribution Contact List

Email address	First name	Last name
<a href="mailto:senronaim@cox.net">senronaim@cox.net</a>	Senetta Aime	
<a href="mailto:shawn.wilson@la.gov">shawn.wilson@la.gov</a>	Shawn	Wilson
<a href="mailto:dmm@murraylaw.net">dmm@murraylaw.net</a>		Dwayne Murray
<a href="mailto:gregory.trahan@aecom.com">gregory.trahan@aecom.com</a>	Trahan	Gregory
<a href="mailto:lance@laplacecs.com">lance@laplacecs.com</a>	Lance	LaPlace
<a href="mailto:david@addisla.org">david@addisla.org</a>	David H.	Toups
<a href="mailto:linteriano@wbrplibrary.us">linteriano@wbrplibrary.us</a>	Luis	Interiano
<a href="mailto:michaelvince2@gmail.com">michaelvince2@gmail.com</a>	Michael	Vince
<a href="mailto:kirk.allain@wbr council.org">kirk.allain@wbr council.org</a>		
<a href="mailto:atley.walker@wbr council.org">atley.walker@wbr council.org</a>		
<a href="mailto:caleb.kleinpeter@wbr council.org">caleb.kleinpeter@wbr council.org</a>		
<a href="mailto:kenneth.gordon@wbr council.org">kenneth.gordon@wbr council.org</a>		
<a href="mailto:carey.denstel@wbr council.org">carey.denstel@wbr council.org</a>		
<a href="mailto:alan.crowe@wbr council.org">alan.crowe@wbr council.org</a>		
<a href="mailto:moonie.bergeron@wbr council.org">moonie.bergeron@wbr council.org</a>		
<a href="mailto:shaq.joseph@wbr council.org">shaq.joseph@wbr council.org</a>		
<a href="mailto:jkoban@fugro.com">jkoban@fugro.com</a>	Jack	Koban
<a href="mailto:lindamj1944@gmail.com">lindamj1944@gmail.com</a>	Linda	Johnson
<a href="mailto:jbasilica@hntb.com">jbasilica@hntb.com</a>	John	Basilica
<a href="mailto:dtanner@hntb.com">dtanner@hntb.com</a>	Daniel	Tanner
<a href="mailto:rawlston@sunplusinc.com">rawlston@sunplusinc.com</a>	Rawlston	Phillips
<a href="mailto:jan.evans@volkert.com">jan.evans@volkert.com</a>	Janet	Evans
<a href="mailto:richard.savoie@greshamsmith.com">richard.savoie@greshamsmith.com</a>	Richard	Savoie
<a href="mailto:zhengzheng.fu@la.gov">zhengzheng.fu@la.gov</a>	Zhengzheng	Fu
<a href="mailto:adupont@prim.com">adupont@prim.com</a>		
<a href="mailto:jonathan.mcdowell@aecom.com">jonathan.mcdowell@aecom.com</a>	Jonathan	McDowell
<a href="mailto:wbonzon@figgbridge.com">wbonzon@figgbridge.com</a>	Bonzon	Wade
<a href="mailto:kara.moree@oneatlas.com">kara.moree@oneatlas.com</a>	Kara	Moree
<a href="mailto:carlos.giron@jacobs.com">carlos.giron@jacobs.com</a>		
<a href="mailto:sara.smith3@cox.net">sara.smith3@cox.net</a>		
<a href="mailto:spslayto@yahoo.com">spslayto@yahoo.com</a>		
<a href="mailto:coraldoc@hotmail.com">coraldoc@hotmail.com</a>		
<a href="mailto:kridgley@cityofbakerla.com">kridgley@cityofbakerla.com</a>		
<a href="mailto:greenone987@gmail.com">greenone987@gmail.com</a>		
<a href="mailto:dean_smart42@yahoo.com">dean_smart42@yahoo.com</a>		
<a href="mailto:classicsbyj@cox.net">classicsbyj@cox.net</a>		
<a href="mailto:jacksonsrCraig@gmail.com">jacksonsrCraig@gmail.com</a>		
<a href="mailto:wtriche@bizca.gov">wtriche@bizca.gov</a>		
<a href="mailto:harold.schexnayder@gmail.com">harold.schexnayder@gmail.com</a>		
<a href="mailto:pkearne@bellsouth.net">pkearne@bellsouth.net</a>		
<a href="mailto:sdonnier2005@yahoo.com">sdonnier2005@yahoo.com</a>		
<a href="mailto:jamie@wbrchamber.org">jamie@wbrchamber.org</a>		
<a href="mailto:jacipinell@yahoo.com">jacipinell@yahoo.com</a>		
<a href="mailto:npalermo225@gmail.com">npalermo225@gmail.com</a>		
<a href="mailto:coachjohnson1957@gmail.com">coachjohnson1957@gmail.com</a>		
<a href="mailto:abeatty@whpacific.com">abeatty@whpacific.com</a>		

Email address	First name	Last name
<a href="mailto:charlieeast1959@yahoo.com">charlieeast1959@yahoo.com</a>		
<a href="mailto:jennifer177@cox.net">jennifer177@cox.net</a>		
<a href="mailto:cherieprejean@gotech-inc.com">cherieprejean@gotech-inc.com</a>		
<a href="mailto:cbonadon@bellsouth.net">cbonadon@bellsouth.net</a>		
<a href="mailto:claytonhebert30@yahoo.com">claytonhebert30@yahoo.com</a>		
<a href="mailto:smitht18@cox.net">smitht18@cox.net</a>		
<a href="mailto:gfirm20@gmail.com">gfirm20@gmail.com</a>		
<a href="mailto:charityb225@att.net">charityb225@att.net</a>		
<a href="mailto:rg-graphics@yahoo.com">rg-graphics@yahoo.com</a>		
<a href="mailto:chris@laclerksofcount.org">chris@laclerksofcount.org</a>		
<a href="mailto:bridges.jim@protonmail.com">bridges.jim@protonmail.com</a>		
<a href="mailto:nncaregiver@gmail.com">nncaregiver@gmail.com</a>		
<a href="mailto:jackiemouton@bellsouth.com">jackiemouton@bellsouth.com</a>		
<a href="mailto:michellej152@yahoo.com">michellej152@yahoo.com</a>		
<a href="mailto:cajundrew@hotmail.com">cajundrew@hotmail.com</a>		
<a href="mailto:anthonyjsummers@gmail.com">anthonyjsummers@gmail.com</a>		
<a href="mailto:tlzito@gmail.com">tlzito@gmail.com</a>		
<a href="mailto:ruger3.5@gmail.com">ruger3.5@gmail.com</a>		
<a href="mailto:lfoster@walshgroup.com">lfoster@walshgroup.com</a>		
<a href="mailto:elijah.hayclip@gmail.com">elijah.hayclip@gmail.com</a>		
<a href="mailto:crb6653@gmail.com">crb6653@gmail.com</a>		
<a href="mailto:dfb54@cox.net">dfb54@cox.net</a>		
<a href="mailto:missd321@yahoo.com">missd321@yahoo.com</a>		
<a href="mailto:fsmith@cox.net">fsmith@cox.net</a>		
<a href="mailto:pippa358@gmail.com">pippa358@gmail.com</a>		
<a href="mailto:jthompson@hessengineers.com">jthompson@hessengineers.com</a>		
<a href="mailto:kaynedaigle@alumni.lsu.edu">kaynedaigle@alumni.lsu.edu</a>		
<a href="mailto:royzito@gmail.com">royzito@gmail.com</a>		
<a href="mailto:epalbarez@live.com">epalbarez@live.com</a>		
<a href="mailto:vsbat730@aol.com">vsbat730@aol.com</a>		
<a href="mailto:jaybutler54@gmail.com">jaybutler54@gmail.com</a>		
<a href="mailto:pastorchris554@gmail.com">pastorchris554@gmail.com</a>		
<a href="mailto:wknight@aol.com">wknight@aol.com</a>		
<a href="mailto:lindseybarbee929@yahoo.com">lindseybarbee929@yahoo.com</a>		
<a href="mailto:chelbi.johnson@mail.house.gov">chelbi.johnson@mail.house.gov</a>		
<a href="mailto:smart588@cox.net">smart588@cox.net</a>		
<a href="mailto:news@wgno.com">news@wgno.com</a>		
<a href="mailto:boudreauxg@legis.la.gov">boudreauxg@legis.la.gov</a>		
<a href="mailto:hallj@legis.la.gov">hallj@legis.la.gov</a>		
<a href="mailto:jordane@legis.la.gov">jordane@legis.la.gov</a>	Edmond	Jordan
<a href="mailto:connie.porter@la.gov">connie.porter@la.gov</a>	Connie	Porter-Betts
<a href="mailto:batonrougedos@ih-corp.com">batonrougedos@ih-corp.com</a>		
<a href="mailto:dishili.young@neel-schaffer.com">dishili.young@neel-schaffer.com</a>	Dishili	Young
<a href="mailto:nick.ferlito@neel-schaffer.com">nick.ferlito@neel-schaffer.com</a>	Nick	Ferlito
<a href="mailto:djuana.beason@terracon.com">djuana.beason@terracon.com</a>	D'Juana	Beason
<a href="mailto:ismith@premiergeotesting.com">ismith@premiergeotesting.com</a>	Smith	Lisa
<a href="mailto:ugomuonwe@landfiletech.com">ugomuonwe@landfiletech.com</a>	Mhonnwe	Ugo

<b>Email address</b>	<b>First name</b>	<b>Last name</b>
<a href="mailto:rwesley@premier.net">rwesley@premier.net</a>	Randy	Wesley
<a href="mailto:christopher.ewing@la.gov">christopher.ewing@la.gov</a>	Chris	Ewing
<a href="mailto:m.todd.donmyer@la.gov">m.todd.donmyer@la.gov</a>	Todd	Donmyer
<a href="mailto:cindy.hall@stantec.com">cindy.hall@stantec.com</a>	Cindy	Hall
<a href="mailto:rihathaway@hntb.com">rihathaway@hntb.com</a>	Rick	Hathaway
<a href="mailto:joey.lefante@stantec.com">joey.lefante@stantec.com</a>	Joey	Lefante
<a href="mailto:stephen.mensah@stantec.com">stephen.mensah@stantec.com</a>	Stephen	Mensah
<a href="mailto:kbprejean@hntb.com">kbprejean@hntb.com</a>	Kate	Prejean
<a href="mailto:jrenard@sigmacg.com">jrenard@sigmacg.com</a>	Josh	Renard
<a href="mailto:gsepeda@sigmacg.com">gsepeda@sigmacg.com</a>	Greg	Sepeda
<a href="mailto:gary.heitman@stantec.com">gary.heitman@stantec.com</a>	Gary	Heitman
<a href="mailto:raqui72962@aol.com">raqui72962@aol.com</a>		
<a href="mailto:lacy@sellswithlacy.com">lacy@sellswithlacy.com</a>		
<a href="mailto:ecouvillion@theadvocate.com">ecouvillion@theadvocate.com</a>	Ellyn	Couvillion
<a href="mailto:corey@ozarktraffic.com">corey@ozarktraffic.com</a>	Corey	Rhodes
<a href="mailto:michael@ozarktraffic.com">michael@ozarktraffic.com</a>	Michael	Taylor
<a href="mailto:peggy.paine@la.gov">peggy.paine@la.gov</a>		
<a href="mailto:andrew.windmann@la.gov">andrew.windmann@la.gov</a>		
<a href="mailto:toby.picard@la.gov">toby.picard@la.gov</a>		
<a href="mailto:jloeske@gisy.com">jloeske@gisy.com</a>		
<a href="mailto:tgattle@huvalassoc.com">tgattle@huvalassoc.com</a>	Thomas	Gattle
<a href="mailto:bgahagan@tricoeur.com">bgahagan@tricoeur.com</a>	Barry	Gahagan
<a href="mailto:pdowns@forteandtablada.com">pdowns@forteandtablada.com</a>	Patrick	Downs
<a href="mailto:lauren@fenstermaker.com">lauren@fenstermaker.com</a>	Lauren	Ortego
<a href="mailto:mnicoladis@n-yassociates.com">mnicoladis@n-yassociates.com</a>	Michael	Nicoladis
<a href="mailto:bert.moore@greshamsmith.com">bert.moore@greshamsmith.com</a>	Bert	Moore
<a href="mailto:scaparotta@wafb.com">scaparotta@wafb.com</a>	Steve	Caparotta
<a href="mailto:mark@lambert-media.com">mark@lambert-media.com</a>	Mark	Lambert
<a href="mailto:michael_eby@cassidy.senate.gov">michael_eby@cassidy.senate.gov</a>	Bill	Cassidy
<a href="mailto:rbourriaque@legis.la.gov">rbourriaque@legis.la.gov</a>		
<a href="mailto:jessica.deville@la.gov">jessica.deville@la.gov</a>	Jessica	Deville
<a href="mailto:tony.chiappetti@kiewit.com">tony.chiappetti@kiewit.com</a>	Tony	Chiappetti
<a href="mailto:bob.fitzner@gcinc.com">bob.fitzner@gcinc.com</a>	Bob	Fitzner
<a href="mailto:wayne4roux@cox.net">wayne4roux@cox.net</a>	Anthony	Fourroux
<a href="mailto:pfrazier@walshgroup.com">pfrazier@walshgroup.com</a>	Phillip	Frazier
<a href="mailto:jkelly@massman.net">jkelly@massman.net</a>	John	Kelley
<a href="mailto:wmahrer@prim.com">wmahrer@prim.com</a>	Bill	Mahrer
<a href="mailto:ghostlightmater@yahoo.com">ghostlightmater@yahoo.com</a>	Jackson	Hurst
<a href="mailto:barry.hughhins@wbrouncil.org">barry.hughhins@wbrouncil.org</a>	Barry	Hughhins
<a href="mailto:bliss@fenstermaker.com">bliss@fenstermaker.com</a>	Bliss	Bernard
<a href="mailto:hugh@blackstardiversified.net">hugh@blackstardiversified.net</a>	Hugh	Blackwell
<a href="mailto:chc@monroecorie.com">chc@monroecorie.com</a>	Craig	Corie
<a href="mailto:jhall@elosenv.com">jhall@elosenv.com</a>	Jerry	Hall
<a href="mailto:ellen.howard@neel-schaffer.com">ellen.howard@neel-schaffer.com</a>	Ellen	Howard
<a href="mailto:dkrone@trccompanies.com">dkrone@trccompanies.com</a>	Durk	Krone
<a href="mailto:reddynandipati@cox.net">reddynandipati@cox.net</a>	Reddy	Nandipati
<a href="mailto:anavarre@gecinc.com">anavarre@gecinc.com</a>	Andrew	Navarre



Email address	First name	Last name
<a href="mailto:will.norman@swca.com">will.norman@swca.com</a>	Norman	Will
<a href="mailto:joutlaw@ardaman.com">joutlaw@ardaman.com</a>	Jerry	Outlaw
<a href="mailto:rjr@fenstermaker.com">rjr@fenstermaker.com</a>	Raymond	Reaux
<a href="mailto:jrichardson@tweinc.com">jrichardson@tweinc.com</a>	James	Richardson
<a href="mailto:taylor.schaul@jacobs.com">taylor.schaul@jacobs.com</a>	Taylor	Schaul
<a href="mailto:connie.standige@neel-schaffer.com">connie.standige@neel-schaffer.com</a>	Connie	Standige
<a href="mailto:daniel.thornhill@mbakerintl.com">daniel.thornhill@mbakerintl.com</a>	Daniel	Thornhill
<a href="mailto:stoussant@gisy.com">stoussant@gisy.com</a>	Seneca	Toussant
<a href="mailto:bschmidt@huvalassoc.com">bschmidt@huvalassoc.com</a>	Bob	Schmidt
<a href="mailto:carolee.fuge2@la.gov">carolee.fuge2@la.gov</a>		
<a href="mailto:risa@franklinassociates.com">risa@franklinassociates.com</a>	Risa	Mueller
<a href="mailto:chris.welty@la.gov">chris.welty@la.gov</a>	Chris	Welty
<a href="mailto:perry@franklinassoc.com">perry@franklinassoc.com</a>	Perry Franklin	
<a href="mailto:paul.sawyer@mail.house.gov">paul.sawyer@mail.house.gov</a>	Paul	Sawyer
<a href="mailto:jburge@latruckstopgaming.com">jburge@latruckstopgaming.com</a>	Jeremy Burge	
<a href="mailto:hardmanj@portqbr.com">hardmanj@portqbr.com</a>	Jay	Hardman
<a href="mailto:harlan.kirgan@eunicetoday.com">harlan.kirgan@eunicetoday.com</a>	Harlan	Kirgan
<a href="mailto:editor@thewestsidejournal.com">editor@thewestsidejournal.com</a>	Quinn	Welsch
<a href="mailto:amindhanani@gulshaninc.com">amindhanani@gulshaninc.com</a>		
<a href="mailto:shoukatdhanani@gulshaninc.com">shoukatdhanani@gulshaninc.com</a>		
<a href="mailto:shoukatdhanani@gulshan.onmicrosoft.com">shoukatdhanani@gulshan.onmicrosoft.com</a>		
<a href="mailto:philip_kloer@fws.gov">philip_kloer@fws.gov</a>		
<a href="mailto:daniel_chapman@fws.gov">daniel_chapman@fws.gov</a>		
<a href="mailto:sir.prashant@comcast.net">sir.prashant@comcast.net</a>		
<a href="mailto:mark_r_davis@fws.gov">mark_r_davis@fws.gov</a>		
<a href="mailto:elsie_davis@fws.gov">elsie_davis@fws.gov</a>		
<a href="mailto:jennifer_koches@fws.gov">jennifer_koches@fws.gov</a>		
<a href="mailto:brijpatel80@gmail.com">brijpatel80@gmail.com</a>		
<a href="mailto:slebas@gecinc.com">slebas@gecinc.com</a>	Sherri	Lebas
<a href="mailto:wedgeedward@stanleygroup.com">wedgeedward@stanleygroup.com</a>	Edward	Wedge
<a href="mailto:billjeansonne@bellsouth.net">billjeansonne@bellsouth.net</a>		
<a href="mailto:todd.jones2@la.gov">todd.jones2@la.gov</a>		
<a href="mailto:mkerry@bossiersheriff.com">mkerry@bossiersheriff.com</a>		
<a href="mailto:dgremillion@cppj.net">dgremillion@cppj.net</a>		
<a href="mailto:jwilliamson@cppj.net">jwilliamson@cppj.net</a>		
<a href="mailto:operationlifesaver@la.gov">operationlifesaver@la.gov</a>		
<a href="mailto:froberts@theadvocate.com">froberts@theadvocate.com</a>		
<a href="mailto:jmoore@diamondb.com">jmoore@diamondb.com</a>		
<a href="mailto:thw2@hotmail.com">thw2@hotmail.com</a>		
<a href="mailto:lisabacques@clearchannel.com">lisabacques@clearchannel.com</a>		
<a href="mailto:fox8news@fox8tv.net">fox8news@fox8tv.net</a>		
<a href="mailto:ndecorte@fox8tv.net">ndecorte@fox8tv.net</a>		
<a href="mailto:slandry@visitlakecharles.org">slandry@visitlakecharles.org</a>		
<a href="mailto:jessica@laretail.org">jessica@laretail.org</a>		
<a href="mailto:scott.rundell@la.gov">scott.rundell@la.gov</a>		
<a href="mailto:news@techetoday.com">news@techetoday.com</a>		
<a href="mailto:mandie.trahan@la.gov">mandie.trahan@la.gov</a>		

Email address	First name	Last name
<a href="mailto:sbrown@sthelenaparish.la.gov">sbrown@sthelenaparish.la.gov</a>		
<a href="mailto:tdarchie242911@yahoo.com">tdarchie242911@yahoo.com</a>		
<a href="mailto:bferguson@kalb.com">bferguson@kalb.com</a>		
<a href="mailto:jared.chaumont@la.gov">jared.chaumont@la.gov</a>		
<a href="mailto:scurrier@watcocompanies.com">scurrier@watcocompanies.com</a>		
<a href="mailto:greg.badon@arcadis.com">greg.badon@arcadis.com</a>		
<a href="mailto:kellyr@fenstermaker.com">kellyr@fenstermaker.com</a>		
<a href="mailto:penny.stroder2@la.gov">penny.stroder2@la.gov</a>		
<a href="mailto:zmartin@hargrove-epc.com">zmartin@hargrove-epc.com</a>		
<a href="mailto:david.hebert@neel-schaffer.com">david.hebert@neel-schaffer.com</a>		
<a href="mailto:porterstreets@yahoo.com">porterstreets@yahoo.com</a>		
<a href="mailto:damekacage@me.com">damekacage@me.com</a>		
<a href="mailto:y_margaret@att.net">y_margaret@att.net</a>		
<a href="mailto:foliveri05@yahoo.com">foliveri05@yahoo.com</a>		
<a href="mailto:mquedimin78@yahoo.com">mquedimin78@yahoo.com</a>		
<a href="mailto:jasminesskipper87@gmail.com">jasminesskipper87@gmail.com</a>		
<a href="mailto:mayosligo@yahoo.com">mayosligo@yahoo.com</a>		
<a href="mailto:robin.smith2@la.gov">robin.smith2@la.gov</a>		
<a href="mailto:tance.fremin@la.gov">tance.fremin@la.gov</a>		
<a href="mailto:swiley@rapides911.org">swiley@rapides911.org</a>		
<a href="mailto:mariaenterprise@bellsouth.net">mariaenterprise@bellsouth.net</a>		
<a href="mailto:steve.strength@la.gov">steve.strength@la.gov</a>		
<a href="mailto:jahysen@wafb.com">jahysen@wafb.com</a>		
<a href="mailto:a.gotro@yahoo.com">a.gotro@yahoo.com</a>		
<a href="mailto:grichards@stratumengr.com">grichards@stratumengr.com</a>		
<a href="mailto:benny.herrington@la.gov">benny.herrington@la.gov</a>		
<a href="mailto:ldoiron@ibervilleparish.com">ldoiron@ibervilleparish.com</a>		
<a href="mailto:lelia.bordelon@la.gov">lelia.bordelon@la.gov</a>		
<a href="mailto:stacie.blackmon@la.gov">stacie.blackmon@la.gov</a>		
<a href="mailto:bryan.hitt@la.gov">bryan.hitt@la.gov</a>		
<a href="mailto:seth.dearmas@la.gov">seth.dearmas@la.gov</a>		
<a href="mailto:cristine.gowland@la.gov">cristine.gowland@la.gov</a>		
<a href="mailto:mschexnider@appj.org">mschexnider@appj.org</a>		
<a href="mailto:scott.boyle@la.gov">scott.boyle@la.gov</a>		
<a href="mailto:polly.smith@la.gov">polly.smith@la.gov</a>		
<a href="mailto:jamelyntr@yahoo.com">jamelyntr@yahoo.com</a>		
<a href="mailto:kdt18@hotmail.com">kdt18@hotmail.com</a>		
<a href="mailto:jnicaud@forteandtablada.com">jnicaud@forteandtablada.com</a>		
<a href="mailto:stephanievincent1711@yahoo.com">stephanievincent1711@yahoo.com</a>		
<a href="mailto:melodyspence@msn.com">melodyspence@msn.com</a>		
<a href="mailto:brandonjh121@yahoo.com">brandonjh121@yahoo.com</a>		
<a href="mailto:cguidry@huvalassoc.com">cguidry@huvalassoc.com</a>		
<a href="mailto:barefootedcountrygirl52@yahoo.com">barefootedcountrygirl52@yahoo.com</a>		
<a href="mailto:pdevillier@legis.la.gov">pdevillier@legis.la.gov</a>		
<a href="mailto:casey.whitcher@la.gov">casey.whitcher@la.gov</a>		
<a href="mailto:scotty.l.goins.civ@mail.mil">scotty.l.goins.civ@mail.mil</a>		
<a href="mailto:agraves@evans-graves.com">agraves@evans-graves.com</a>		

Email address	First name	Last name
<a href="mailto:debbie_neill2002@yahoo.com">debbie_neill2002@yahoo.com</a>		
<a href="mailto:shellieshortt.ss@gmail.com">shellieshortt.ss@gmail.com</a>		
<a href="mailto:terry.newgard@motorolasolutions.com">terry.newgard@motorolasolutions.com</a>		
<a href="mailto:knormand1@gmail.com">knormand1@gmail.com</a>		
<a href="mailto:mark.arceneaux@la.gov">mark.arceneaux@la.gov</a>		
<a href="mailto:barberdustin95@yahoo.com">barberdustin95@yahoo.com</a>		
<a href="mailto:cdhernandez60@yahoo.com">cdhernandez60@yahoo.com</a>		
<a href="mailto:dedrick.milton@la.gov">dedrick.milton@la.gov</a>		
<a href="mailto:citymanager@carencro.org">citymanager@carencro.org</a>		
<a href="mailto:news@daily-review.com">news@daily-review.com</a>		
<a href="mailto:cty17999@centurytel.net">cty17999@centurytel.net</a>		
<a href="mailto:seth.woods@la.gov">seth.woods@la.gov</a>		
<a href="mailto:derrickprimeaux@yahoo.com">derrickprimeaux@yahoo.com</a>		
<a href="mailto:nognbc1995@yahoo.com">nognbc1995@yahoo.com</a>		
<a href="mailto:bethvandersteen@hotmail.com">bethvandersteen@hotmail.com</a>		
<a href="mailto:jadelson@theadvocate.com">jadelson@theadvocate.com</a>		
<a href="mailto:stacie.palmer@la.gov">stacie.palmer@la.gov</a>		
<a href="mailto:dorthacummins@yahoo.com">dorthacummins@yahoo.com</a>		
<a href="mailto:heather.bandy@la.gov">heather.bandy@la.gov</a>		
<a href="mailto:ronbeatle@gmail.com">ronbeatle@gmail.com</a>		
<a href="mailto:govpress@la.gov">govpress@la.gov</a>		
<a href="mailto:zeb.sartin@gmail.com">zeb.sartin@gmail.com</a>		
<a href="mailto:mjarrell@efschools.net">mjarrell@efschools.net</a>		
<a href="mailto:carterelectricsupplyllc@gmail.com">carterelectricsupplyllc@gmail.com</a>		
<a href="mailto:barry.keeling@la.gov">barry.keeling@la.gov</a>		
<a href="mailto:tommy_minvielle@kindermorgan.com">tommy_minvielle@kindermorgan.com</a>		
<a href="mailto:gslanandtractorservice@gmail.com">gslanandtractorservice@gmail.com</a>		
<a href="mailto:khsroos_79@yahoo.com">khsroos_79@yahoo.com</a>		
<a href="mailto:dmitchell@theadvocate.com">dmitchell@theadvocate.com</a>		
<a href="mailto:roberts727@aol.com">roberts727@aol.com</a>		
<a href="mailto:matthulin@gmail.com">matthulin@gmail.com</a>		
<a href="mailto:chris.lissard@la.gov">chris.lissard@la.gov</a>		
<a href="mailto:cynthia.hernandez@la.gov">cynthia.hernandez@la.gov</a>		
<a href="mailto:nannylizz@aol.com">nannylizz@aol.com</a>		
<a href="mailto:steve.buskie@la.gov">steve.buskie@la.gov</a>		
<a href="mailto:brichard84@yahoo.com">brichard84@yahoo.com</a>		
<a href="mailto:justinclement@assumptionla.com">justinclement@assumptionla.com</a>		
<a href="mailto:info@patwilliamsconstruction.com">info@patwilliamsconstruction.com</a>		
<a href="mailto:fnicoladis@n-yassociates.com">fnicoladis@n-yassociates.com</a>		
<a href="mailto:backdraft_1988@hotmail.com">backdraft_1988@hotmail.com</a>		
<a href="mailto:jfox@itsanswers.com">jfox@itsanswers.com</a>		
<a href="mailto:saduhons@msn.com">saduhons@msn.com</a>		
<a href="mailto:johnngagnard@paealex.com">johnngagnard@paealex.com</a>		
<a href="mailto:microtelbb@gmail.com">microtelbb@gmail.com</a>		
<a href="mailto:jferguson@wfparish.org">jferguson@wfparish.org</a>		
<a href="mailto:maryk1991@icloud.com">maryk1991@icloud.com</a>		
<a href="mailto:lucy.kimbeng@la.gov">lucy.kimbeng@la.gov</a>		

Email address	First name	Last name
<a href="mailto:dwayne.schaefer@gmail.com">dwayne.schaefer@gmail.com</a>		
<a href="mailto:ljdeen@hotmail.com">ljdeen@hotmail.com</a>		
<a href="mailto:rosebud_70003@yahoo.com">rosebud_70003@yahoo.com</a>		
<a href="mailto:desbev1029@yahoo.com">desbev1029@yahoo.com</a>		
<a href="mailto:hebertv@yahoo.com">hebertv@yahoo.com</a>		
<a href="mailto:justina@bennyscarwash.com">justina@bennyscarwash.com</a>		
<a href="mailto:cloggerlady38@gmail.com">cloggerlady38@gmail.com</a>		
<a href="mailto:steal@lpcgov.com">steal@lpcgov.com</a>		
<a href="mailto:wcurry@inline.com">wcurry@inline.com</a>		
<a href="mailto:huey.deville@ceresenv.com">huey.deville@ceresenv.com</a>		
<a href="mailto:vtravis@tangipahoa.org">vtravis@tangipahoa.org</a>		
<a href="mailto:bookerm@bossiercity.org">bookerm@bossiercity.org</a>		
<a href="mailto:rsavoy@agcenter.lsu.edu">rsavoy@agcenter.lsu.edu</a>		
<a href="mailto:jdoxley@cox.net">jdoxley@cox.net</a>		
<a href="mailto:cajunater1@yahoo.com">cajunater1@yahoo.com</a>		
<a href="mailto:belindaortego@yahoo.com">belindaortego@yahoo.com</a>		
<a href="mailto:lynn@vermilionchamber.org">lynn@vermilionchamber.org</a>		
<a href="mailto:bwarren@nola.com">bwarren@nola.com</a>		
<a href="mailto:jimmiec216@yahoo.com">jimmiec216@yahoo.com</a>		
<a href="mailto:gsmith@stph.org">gsmith@stph.org</a>		
<a href="mailto:tcormier@gotech-inc.com">tcormier@gotech-inc.com</a>		
<a href="mailto:kmvogt7@hotmail.com">kmvogt7@hotmail.com</a>		
<a href="mailto:bgray@jsengr.com">bgray@jsengr.com</a>		
<a href="mailto:jpage@pagecotools.com">jpage@pagecotools.com</a>		
<a href="mailto:alphatec4500@aol.com">alphatec4500@aol.com</a>		
<a href="mailto:kathycmccoy@gmail.com">kathycmccoy@gmail.com</a>		
<a href="mailto:tdupre@meyer-e-l.com">tdupre@meyer-e-l.com</a>		
<a href="mailto:elonaboggs@aol.com">elonaboggs@aol.com</a>		
<a href="mailto:lashaun_thms@yahoo.com">lashaun_thms@yahoo.com</a>		
<a href="mailto:ben_pauldesign.build@yahoo.com">ben_pauldesign.build@yahoo.com</a>		
<a href="mailto:cassandra_53m_turner@yahoo.com">cassandra_53m_turner@yahoo.com</a>		
<a href="mailto:nevilsfamily@gmail.com">nevilsfamily@gmail.com</a>		
<a href="mailto:cindy_wicke@yahoo.com">cindy_wicke@yahoo.com</a>		
<a href="mailto:tfauch222@yahoo.com">tfauch222@yahoo.com</a>		
<a href="mailto:gtonding@chemtradelogistics.com">gtonding@chemtradelogistics.com</a>		
<a href="mailto:jay.timon@gmail.com">jay.timon@gmail.com</a>		
<a href="mailto:matt@rapc.info">matt@rapc.info</a>		
<a href="mailto:adriane.mcrae@la.gov">adriane.mcrae@la.gov</a>		
<a href="mailto:ccrawford@gecinc.com">ccrawford@gecinc.com</a>		
<a href="mailto:christa@acadianamazda.com">christa@acadianamazda.com</a>		
<a href="mailto:pbartow@sdive.com">pbartow@sdive.com</a>		
<a href="mailto:rcasig24@yahoo.com">rcasig24@yahoo.com</a>		
<a href="mailto:melb@precisioncrane.net">melb@precisioncrane.net</a>		
<a href="mailto:katherine.sinitiere@la.gov">katherine.sinitiere@la.gov</a>		
<a href="mailto:bridges@finleyengineeringgroup.com">bridges@finleyengineeringgroup.com</a>		
<a href="mailto:mjmeche@cox.net">mjmeche@cox.net</a>		
<a href="mailto:tattooed.ink.83@gmail.com">tattooed.ink.83@gmail.com</a>		

Email address	First name	Last name
<a href="mailto:rawley@fenstermaker.com">rawley@fenstermaker.com</a>		
<a href="mailto:mallorywall@msn.com">mallorywall@msn.com</a>		
<a href="mailto:rozikaamin@yahoo.com">rozikaamin@yahoo.com</a>		
<a href="mailto:linterianolib@gmail.com">linterianolib@gmail.com</a>		
<a href="mailto:chance@premierpolicies.com">chance@premierpolicies.com</a>		
<a href="mailto:ibursey@yahoo.com">ibursey@yahoo.com</a>		
<a href="mailto:krogers7256@yahoo.com">krogers7256@yahoo.com</a>		
<a href="mailto:kiegan.marek@la.gov">kiegan.marek@la.gov</a>		
<a href="mailto:brandon.pitre@mbakerintl.com">brandon.pitre@mbakerintl.com</a>		
<a href="mailto:kirk.gallien@neel-schaffer.com">kirk.gallien@neel-schaffer.com</a>		
<a href="mailto:eelam@emailatg.com">eelam@emailatg.com</a>		
<a href="mailto:rjewell@ardaman.com">rjewell@ardaman.com</a>		
<a href="mailto:ellacrochet@yahoo.com">ellacrochet@yahoo.com</a>		
<a href="mailto:haley_alleman@yahoo.com">haley_alleman@yahoo.com</a>		
<a href="mailto:maryterry@bellsouth.net">maryterry@bellsouth.net</a>		
<a href="mailto:dfalghou@jeffparish.net">dfalghou@jeffparish.net</a>		
<a href="mailto:erich.ponti@lahotmix.org">erich.ponti@lahotmix.org</a>		
<a href="mailto:mfranks@lsua.edu">mfranks@lsua.edu</a>		
<a href="mailto:ederoche@cox.net">ederoche@cox.net</a>		
<a href="mailto:sooraz@rapc.info">sooraz@rapc.info</a>		
<a href="mailto:jwalker@half.com">jwalker@half.com</a>		
<a href="mailto:rshinn01@yahoo.com">rshinn01@yahoo.com</a>		
<a href="mailto:jrichard@traylor.com">jrichard@traylor.com</a>		
<a href="mailto:frogstoo@gmail.com">frogstoo@gmail.com</a>		
<a href="mailto:shelly.sigo@sourcemediacom.com">shelly.sigo@sourcemediacom.com</a>		
<a href="mailto:jennifer.bonnette@la.gov">jennifer.bonnette@la.gov</a>		
<a href="mailto:david.franks9272@gmail.com">david.franks9272@gmail.com</a>		
<a href="mailto:rweinstein@wafb.com">rweinstein@wafb.com</a>		
<a href="mailto:ecallicut@figgbridge.com">ecallicut@figgbridge.com</a>		
<a href="mailto:jason.michiels@la.gov">jason.michiels@la.gov</a>		
<a href="mailto:mdinnat@gilchristconstruction.com">mdinnat@gilchristconstruction.com</a>		
<a href="mailto:justinrogers383@gmail.com">justinrogers383@gmail.com</a>		
<a href="mailto:jerry.trumps@neel-schaffer.com">jerry.trumps@neel-schaffer.com</a>		
<a href="mailto:toot1229@outlook.com">toot1229@outlook.com</a>		
<a href="mailto:turnerdelaanna@gmail.com">turnerdelaanna@gmail.com</a>		
<a href="mailto:tswanson@gecinc.com">tswanson@gecinc.com</a>		
<a href="mailto:sridhar.basetty@arcadis.com">sridhar.basetty@arcadis.com</a>		
<a href="mailto:tsmith@lafayettela.gov">tsmith@lafayettela.gov</a>		
<a href="mailto:jmonceaux@harteng.com">jmonceaux@harteng.com</a>		
<a href="mailto:kmcdaniel@cobbfindley.com">kmcdaniel@cobbfindley.com</a>		
<a href="mailto:jstefanski@legis.la.gov">jstefanski@legis.la.gov</a>		
<a href="mailto:callie@fenstermaker.com">callie@fenstermaker.com</a>		
<a href="mailto:khalil.hanifa@la.gov">khalil.hanifa@la.gov</a>		
<a href="mailto:donald@teamonetworks.com">donald@teamonetworks.com</a>		
<a href="mailto:cyndisell@hotmail.com">cyndisell@hotmail.com</a>		
<a href="mailto:gjjacculine@yahoo.com">gjjacculine@yahoo.com</a>		
<a href="mailto:kevingilbert39@aol.com">kevingilbert39@aol.com</a>		

Email address	First name	Last name
<a href="mailto:sdowden@sulphur.org">sdowden@sulphur.org</a>		
<a href="mailto:amy.miller2@la.gov">amy.miller2@la.gov</a>		
<a href="mailto:jbates93@me.com">jbates93@me.com</a>		
<a href="mailto:jwelborn@cityofslidell.org">jwelborn@cityofslidell.org</a>		
<a href="mailto:branchbrenda@bellsouth.net">branchbrenda@bellsouth.net</a>		
<a href="mailto:svincent@mca-llc.com">svincent@mca-llc.com</a>		
<a href="mailto:dmorales@lhjunius.com">dmorales@lhjunius.com</a>		
<a href="mailto:bnaghavi@hardestyhanover.com">bnaghavi@hardestyhanover.com</a>		
<a href="mailto:scouvi@afjmc.com">scouvi@afjmc.com</a>		
<a href="mailto:skaengr@skaengr.com">skaengr@skaengr.com</a>		
<a href="mailto:bradcore@msn.com">bradcore@msn.com</a>		
<a href="mailto:jason.a.emery@usace.army.mil">jason.a.emery@usace.army.mil</a>		
<a href="mailto:rmcguire@hrvinc.com">rmcguire@hrvinc.com</a>		
<a href="mailto:chulon@moffattnichol.com">chulon@moffattnichol.com</a>		
<a href="mailto:sjbdotd@sjbgroup.com">sjbdotd@sjbgroup.com</a>		
<a href="mailto:amday@modjeski.com">amday@modjeski.com</a>		
<a href="mailto:morinetrucking@yahoo.com">morinetrucking@yahoo.com</a>		
<a href="mailto:brenton.jenkins@cardno.com">brenton.jenkins@cardno.com</a>		
<a href="mailto:cordell.williams@la.gov">cordell.williams@la.gov</a>		
<a href="mailto:nregg@sain.com">nregg@sain.com</a>		
<a href="mailto:jtrichel@paffordems.com">jtrichel@paffordems.com</a>		
<a href="mailto:abacord5122018@gmail.com">abacord5122018@gmail.com</a>		
<a href="mailto:betina.marks@la.gov">betina.marks@la.gov</a>		
<a href="mailto:vrq70535@yahoo.com">vrq70535@yahoo.com</a>		
<a href="mailto:s.tinsleybpt@gmail.com">s.tinsleybpt@gmail.com</a>		
<a href="mailto:info@futureinterstatecorridors.com">info@futureinterstatecorridors.com</a>		
<a href="mailto:abeatty@gisy.com">abeatty@gisy.com</a>		
<a href="mailto:accounts@terrafirmland.com">accounts@terrafirmland.com</a>		
<a href="mailto:nanette@nanettecook.com">nanette@nanettecook.com</a>		
<a href="mailto:kalan.couvillion@la.gov">kalan.couvillion@la.gov</a>		
<a href="mailto:joy.johnson@la.gov">joy.johnson@la.gov</a>		
<a href="mailto:hadi.shirazi@la.gov">hadi.shirazi@la.gov</a>		
<a href="mailto:weathermandan@att.net">weathermandan@att.net</a>		
<a href="mailto:bjohnson@southlandenv.com">bjohnson@southlandenv.com</a>		
<a href="mailto:lacey.thibodeaux@stantec.com">lacey.thibodeaux@stantec.com</a>		
<a href="mailto:glenda.shaheen@gsaengineers.com">glenda.shaheen@gsaengineers.com</a>		
<a href="mailto:butch@fenstermaker.com">butch@fenstermaker.com</a>		
<a href="mailto:dcruz@dacpconstruction.com">dcruz@dacpconstruction.com</a>		
<a href="mailto:2022tsh@gmail.com">2022tsh@gmail.com</a>		
<a href="mailto:eric.dauphine@la.gov">eric.dauphine@la.gov</a>		
<a href="mailto:mjmac46@aol.com">mjmac46@aol.com</a>		
<a href="mailto:ggwash@cox.net">ggwash@cox.net</a>		
<a href="mailto:dragonfly22452@yahoo.com">dragonfly22452@yahoo.com</a>		
<a href="mailto:customlawncare@bellsouth.net">customlawncare@bellsouth.net</a>		
<a href="mailto:jdm3177@yahoo.com">jdm3177@yahoo.com</a>		
<a href="mailto:tprofit@apple.com">tprofit@apple.com</a>		
<a href="mailto:mrobson@fugro.com">mrobson@fugro.com</a>		



Email address	First name	Last name
<a href="mailto:buddylauramills@yahoo.com">buddylauramills@yahoo.com</a>		
<a href="mailto:caroline.mladenka@localgovstrategists.com">caroline.mladenka@localgovstrategists.com</a>		
<a href="mailto:ari.deitch@arcadis.com">ari.deitch@arcadis.com</a>		
<a href="mailto:stephen_pomes@yahoo.com">stephen_pomes@yahoo.com</a>		
<a href="mailto:bridget.benedict@oaktreeinn.com">bridget.benedict@oaktreeinn.com</a>		
<a href="mailto:williamsbnk@aol.com">williamsbnk@aol.com</a>		
<a href="mailto:lea.smith@la.gov">lea.smith@la.gov</a>		
<a href="mailto:sharon.thoms@fmolhs.org">sharon.thoms@fmolhs.org</a>		
<a href="mailto:brent.domingue@la.gov">brent.domingue@la.gov</a>		
<a href="mailto:guilloryamy@yahoo.com">guilloryamy@yahoo.com</a>		
<a href="mailto:ccrockarell@powereq.com">ccrockarell@powereq.com</a>		
<a href="mailto:ewilson@gecinc.com">ewilson@gecinc.com</a>		
<a href="mailto:njunius@lhjunius.com">njunius@lhjunius.com</a>		
<a href="mailto:brichards@n-yassociates.com">brichards@n-yassociates.com</a>		
<a href="mailto:news@myparishnews.com">news@myparishnews.com</a>		
<a href="mailto:desmond.sam@la.gov">desmond.sam@la.gov</a>		
<a href="mailto:sburkes@jvburkes.com">sburkes@jvburkes.com</a>		
<a href="mailto:kazem@ecmconsultants.com">kazem@ecmconsultants.com</a>		
<a href="mailto:srossini@ntbainc.com">srossini@ntbainc.com</a>		
<a href="mailto:jhird@moffatnichol.com">jhird@moffatnichol.com</a>		
<a href="mailto:stephanie.young@arcadis.com">stephanie.young@arcadis.com</a>		
<a href="mailto:alex@bluewingcivil.com">alex@bluewingcivil.com</a>		
<a href="mailto:doree.magiera@hdrinc.com">doree.magiera@hdrinc.com</a>		
<a href="mailto:cherry@fdaengineers.com">cherry@fdaengineers.com</a>		
<a href="mailto:sergio@aps-testing.com">sergio@aps-testing.com</a>		
<a href="mailto:tmahab@aol.com">tmahab@aol.com</a>		
<a href="mailto:adam.halpin@arcadis.com">adam.halpin@arcadis.com</a>		
<a href="mailto:anitaq@checla.com">anitaq@checla.com</a>		
<a href="mailto:brett.haggerty@pavetex.com">brett.haggerty@pavetex.com</a>		
<a href="mailto:jchustz@chustz.com">jchustz@chustz.com</a>		
<a href="mailto:cajundeb@gmail.com">cajundeb@gmail.com</a>		
<a href="mailto:ddupre@meyer-e-l.com">ddupre@meyer-e-l.com</a>		
<a href="mailto:news1@jenningsdailynews.net">news1@jenningsdailynews.net</a>		
<a href="mailto:alexthistle3@gmail.com">alexthistle3@gmail.com</a>		
<a href="mailto:r-patrickdiamond@remax.net">r-patrickdiamond@remax.net</a>		
<a href="mailto:kyle@biglakeroad.net">kyle@biglakeroad.net</a>		
<a href="mailto:derrick_eric2018@icloud.com">derrick_eric2018@icloud.com</a>		
<a href="mailto:cfarrell@risktreeservice.com">cfarrell@risktreeservice.com</a>		
<a href="mailto:gromero@gecinc.com">gromero@gecinc.com</a>		
<a href="mailto:wbonvillain_inc@yahoo.com">wbonvillain_inc@yahoo.com</a>		
<a href="mailto:tjones@theadvocate.com">tjones@theadvocate.com</a>		
<a href="mailto:msears1939@ymail.com">msears1939@ymail.com</a>		
<a href="mailto:gneeseb1972@yahoo.com">gneeseb1972@yahoo.com</a>		
<a href="mailto:philpark@bellsouth.net">philpark@bellsouth.net</a>		
<a href="mailto:stephen.hickman@ampacet.com">stephen.hickman@ampacet.com</a>		
<a href="mailto:kelly.wilson@us.indorama.net">kelly.wilson@us.indorama.net</a>		
<a href="mailto:luis.interiano3@gmail.com">luis.interiano3@gmail.com</a>		

Email address	First name	Last name
<a href="mailto:vanessagueringer@yahoo.com">vanessagueringer@yahoo.com</a>		
<a href="mailto:chance.shuckrow@neel-schaffer.com">chance.shuckrow@neel-schaffer.com</a>		
<a href="mailto:wanda.bourque@diamondb.com">wanda.bourque@diamondb.com</a>		
<a href="mailto:renntay15@gmail.com">renntay15@gmail.com</a>		
<a href="mailto:finance@goodshepherd-lc.com">finance@goodshepherd-lc.com</a>		
<a href="mailto:sarmstrong@moffatnichol.com">sarmstrong@moffatnichol.com</a>		
<a href="mailto:lisa@wbianola.com">lisa@wbianola.com</a>		
<a href="mailto:jamie@cmnlandservices.com">jamie@cmnlandservices.com</a>		
<a href="mailto:psleezer@americanpress.com">psleezer@americanpress.com</a>		
<a href="mailto:shenitabynum@ymail.com">shenitabynum@ymail.com</a>		
<a href="mailto:rrousset@ardaman.com">rrousset@ardaman.com</a>		
<a href="mailto:kdyhart@yahoo.com">kdyhart@yahoo.com</a>		
<a href="mailto:info-marketing@half.com">info-marketing@half.com</a>		
<a href="mailto:dsodell@stpgov.org">dsodell@stpgov.org</a>		
<a href="mailto:kelly.hansen@stantec.com">kelly.hansen@stantec.com</a>		
<a href="mailto:rjchopin@bkusa.com">rjchopin@bkusa.com</a>		
<a href="mailto:jgreer@sain.com">jgreer@sain.com</a>		
<a href="mailto:robert.willie@la.gov">robert.willie@la.gov</a>		
<a href="mailto:mchugh@lpn1898.com">mchugh@lpn1898.com</a>		
<a href="mailto:brockm@barriere.com">brockm@barriere.com</a>		
<a href="mailto:julia@businessreport.com">julia@businessreport.com</a>		
<a href="mailto:jmingo@bucharthorn.com">jmingo@bucharthorn.com</a>		
<a href="mailto:shannon.orillion@la.gov">shannon.orillion@la.gov</a>		
<a href="mailto:chris.allen@atkinsglobal.com">chris.allen@atkinsglobal.com</a>		
<a href="mailto:kenl@latterblum.com">kenl@latterblum.com</a>		
<a href="mailto:brad.brown@mbakerintl.com">brad.brown@mbakerintl.com</a>		
<a href="mailto:nmb.designer@gmail.com">nmb.designer@gmail.com</a>		
<a href="mailto:rayccullen@gmail.com">rayccullen@gmail.com</a>		
<a href="mailto:derrickgage@mattdurand.com">derrickgage@mattdurand.com</a>		
<a href="mailto:ashleycrain032009@gmail.com">ashleycrain032009@gmail.com</a>		
<a href="mailto:dennis.hymel@crescentengla.com">dennis.hymel@crescentengla.com</a>		
<a href="mailto:jean.reulet@tbsmith.com">jean.reulet@tbsmith.com</a>		
<a href="mailto:nicoleqf82@yahoo.com">nicoleqf82@yahoo.com</a>		
<a href="mailto:tyronewilford25@gmail.com">tyronewilford25@gmail.com</a>		
<a href="mailto:pduffy@hntb.com">pduffy@hntb.com</a>		
<a href="mailto:sbayne@deii.net">sbayne@deii.net</a>		
<a href="mailto:brett.anderson1990@outlook.com">brett.anderson1990@outlook.com</a>		
<a href="mailto:lavist23@outlook.com">lavist23@outlook.com</a>		
<a href="mailto:christina.everett@us.mcd.com">christina.everett@us.mcd.com</a>		
<a href="mailto:roosterlogging@hotmail.com">roosterlogging@hotmail.com</a>		
<a href="mailto:michael.leblanc@la.gov">michael.leblanc@la.gov</a>		
<a href="mailto:john.weary@la.gov">john.weary@la.gov</a>		
<a href="mailto:melissa.lavergne@ice-eng.com">melissa.lavergne@ice-eng.com</a>		
<a href="mailto:kevinamaraz35@gmail.com">kevinamaraz35@gmail.com</a>		
<a href="mailto:mconrey@stcharlescoa.com">mconrey@stcharlescoa.com</a>		
<a href="mailto:cindy.henry@volkert.com">cindy.henry@volkert.com</a>		
<a href="mailto:crrichmond28@gmail.com">crrichmond28@gmail.com</a>		

Email address	First name	Last name
<a href="mailto:cindylasseigne@yahoo.com">cindylasseigne@yahoo.com</a>		
<a href="mailto:grice@fenstermaker.com">grice@fenstermaker.com</a>		
<a href="mailto:jeffjimmy1969@yahoo.com">jeffjimmy1969@yahoo.com</a>		
<a href="mailto:dgarber@ecmconsultants.com">dgarber@ecmconsultants.com</a>		
<a href="mailto:sluquiv@jsengr.com">sluquiv@jsengr.com</a>		
<a href="mailto:david.decou@la.gov">david.decou@la.gov</a>		
<a href="mailto:devon.zeringue@shafferindustrial.com">devon.zeringue@shafferindustrial.com</a>		
<a href="mailto:rmills@legis.la.gov">rmills@legis.la.gov</a>		
<a href="mailto:doloresmanderson@aol.com">doloresmanderson@aol.com</a>		
<a href="mailto:rsparacino@matrixservice.com">rsparacino@matrixservice.com</a>		
<a href="mailto:owen.mimi2020@gmail.com">owen.mimi2020@gmail.com</a>		
<a href="mailto:teresecoleman@yahoo.com">teresecoleman@yahoo.com</a>		
<a href="mailto:cjoy@bucharthorn.com">cjoy@bucharthorn.com</a>		
<a href="mailto:bholleman@forteandtablada.com">bholleman@forteandtablada.com</a>		
<a href="mailto:kspeir@itineraconcessions.com">kspeir@itineraconcessions.com</a>		
<a href="mailto:editor@jenningsdailynews.net">editor@jenningsdailynews.net</a>		
<a href="mailto:marty.willett@la.gov">marty.willett@la.gov</a>		
<a href="mailto:milingoni@pecla.com">milingoni@pecla.com</a>		
<a href="mailto:decobj@outlook.com">decobj@outlook.com</a>		
<a href="mailto:b_b_lou82@yahoo.com">b_b_lou82@yahoo.com</a>		
<a href="mailto:louiseboudreaux31763@gmail.com">louiseboudreaux31763@gmail.com</a>		
<a href="mailto:kfjt_neal@yahoo.com">kfjt_neal@yahoo.com</a>		
<a href="mailto:jim.keith@freese.com">jim.keith@freese.com</a>		
<a href="mailto:rrenz@rkci.com">rrenz@rkci.com</a>		
<a href="mailto:sketch.waze@gmail.com">sketch.waze@gmail.com</a>		
<a href="mailto:m.egglestonk@gmail.com">m.egglestonk@gmail.com</a>		
<a href="mailto:bbernard@gecinc.com">bbernard@gecinc.com</a>		
<a href="mailto:jalynn.matthews@la.gov">jalynn.matthews@la.gov</a>		
<a href="mailto:john.flint@exp.com">john.flint@exp.com</a>		
<a href="mailto:gary.barabino@la.gov">gary.barabino@la.gov</a>		
<a href="mailto:alexhandcock1@outlook.com">alexhandcock1@outlook.com</a>		
<a href="mailto:sherithughes@gmail.com">sherithughes@gmail.com</a>		
<a href="mailto:lpauley@ccim.net">lpauley@ccim.net</a>		
<a href="mailto:adam.mercer@rsandh.com">adam.mercer@rsandh.com</a>		
<a href="mailto:cturner@mnwe.com">cturner@mnwe.com</a>		
<a href="mailto:jmcwilliams@mansonconstruction.com">jmcwilliams@mansonconstruction.com</a>		
<a href="mailto:rainscologistics@gmail.com">rainscologistics@gmail.com</a>		
<a href="mailto:melinda@parlouisiana.org">melinda@parlouisiana.org</a>		
<a href="mailto:cfarrar@wwltv.com">cfarrar@wwltv.com</a>		
<a href="mailto:travis.barr@csrsinc.com">travis.barr@csrsinc.com</a>		
<a href="mailto:acooper@emailatg.com">acooper@emailatg.com</a>		
<a href="mailto:eric@businessreport.com">eric@businessreport.com</a>		
<a href="mailto:tjblucas1174@yahoo.com">tjblucas1174@yahoo.com</a>		
<a href="mailto:lbriner@coreoccupational.com">lbriner@coreoccupational.com</a>		
<a href="mailto:svaaptagroup@gmail.com">svaaptagroup@gmail.com</a>		
<a href="mailto:mscheidt@brproud.com">mscheidt@brproud.com</a>		
<a href="mailto:kimberly@itsanswers.com">kimberly@itsanswers.com</a>		

Email address	First name	Last name
<a href="mailto:grose@bkiusa.com">grose@bkiusa.com</a>		
<a href="mailto:dwiller@dccm.com">dwiller@dccm.com</a>		
<a href="mailto:angela.lafleur1022@gmail.com">angela.lafleur1022@gmail.com</a>		
<a href="mailto:sherell.parker@la.gov">sherell.parker@la.gov</a>		
<a href="mailto:paige@imcal.la">paige@imcal.la</a>		
<a href="mailto:william.detwiler@tylin.com">william.detwiler@tylin.com</a>		
<a href="mailto:sleektortoise@aol.com">sleektortoise@aol.com</a>		
<a href="mailto:katchison@bucharthorn.com">katchison@bucharthorn.com</a>		
<a href="mailto:jcassagne@jeffparish.net">jcassagne@jeffparish.net</a>		
<a href="mailto:carrie70663@yahoo.com">carrie70663@yahoo.com</a>		
<a href="mailto:ross.hughes@mmlh.com">ross.hughes@mmlh.com</a>		
<a href="mailto:shodges@floodauthority.org">shodges@floodauthority.org</a>		
<a href="mailto:danderson@carencropd.com">danderson@carencropd.com</a>		
<a href="mailto:paul.steinberg@gocarma.com">paul.steinberg@gocarma.com</a>		
<a href="mailto:boyd.boswell@tbsmith.com">boyd.boswell@tbsmith.com</a>		
<a href="mailto:eb4556@att.com">eb4556@att.com</a>		
<a href="mailto:timeoutofhere@yahoo.com">timeoutofhere@yahoo.com</a>		
<a href="mailto:zephyrsman@outlook.com">zephyrsman@outlook.com</a>		
<a href="mailto:priscilla.hall@la.gov">priscilla.hall@la.gov</a>		
<a href="mailto:montandonfamily@gmail.com">montandonfamily@gmail.com</a>		
<a href="mailto:yperez@hardestyhanover.com">yperez@hardestyhanover.com</a>		
<a href="mailto:rvinet@ksaeng.com">rvinet@ksaeng.com</a>		
<a href="mailto:mhenry@urbansystems.com">mhenry@urbansystems.com</a>		
<a href="mailto:gmitchell@ara.com">gmitchell@ara.com</a>		
<a href="mailto:danderson@wfparish.org">danderson@wfparish.org</a>		
<a href="mailto:brant.richard@waggonereng.com">brant.richard@waggonereng.com</a>		
<a href="mailto:bradott@bellsouth.net">bradott@bellsouth.net</a>		
<a href="mailto:shenellecdb@yahoo.com">shenellecdb@yahoo.com</a>		
<a href="mailto:courtoiscurt@gmail.com">courtoiscurt@gmail.com</a>		
<a href="mailto:mpaul@trccompanies.com">mpaul@trccompanies.com</a>		
<a href="mailto:pinetwfire2195@gmail.com">pinetwfire2195@gmail.com</a>		
<a href="mailto:wcherylchr@gmail.com">wcherylchr@gmail.com</a>		
<a href="mailto:mtoler@gesla.com">mtoler@gesla.com</a>		
<a href="mailto:nguyentimmy19@gmail.com">nguyentimmy19@gmail.com</a>		
<a href="mailto:vaughn@insmlc.com">vaughn@insmlc.com</a>		
<a href="mailto:tristans@fenstermaker.com">tristans@fenstermaker.com</a>		
<a href="mailto:jdubreuil@daiglefisse.com">jdubreuil@daiglefisse.com</a>		
<a href="mailto:jeremiahj@bottomlineequipment.com">jeremiahj@bottomlineequipment.com</a>		
<a href="mailto:michelle.hanks@la.gov">michelle.hanks@la.gov</a>	Michelle	Hanks
<a href="mailto:corey.landry@la.gov">corey.landry@la.gov</a>	Corey	Landry
<a href="mailto:jeff@kane1240.com">jeff@kane1240.com</a>		
<a href="mailto:fjglaeser@bellsouth.net">fjglaeser@bellsouth.net</a>	Francis	Glaeser
<a href="mailto:jim.poe@kiewit.com">jim.poe@kiewit.com</a>	Jim	Poe
<a href="mailto:llambert@vecturacs.com">llambert@vecturacs.com</a>	Laurence	Lambert
<a href="mailto:rsunde@coastalenv.com">rsunde@coastalenv.com</a>		
<a href="mailto:rthomas985@aol.com">rthomas985@aol.com</a>	Bobby	Thomas
<a href="mailto:nshaw@gecinc.com">nshaw@gecinc.com</a>		

Email address	First name	Last name
<a href="mailto:srhodes@bruslyla.com">srhodes@bruslyla.com</a>		
<a href="mailto:dotdpi@la.gov">dotdpi@la.gov</a>		
<a href="mailto:gplacour@lsu.edu">gplacour@lsu.edu</a>	Greg	LaCour
<a href="mailto:stephanied.rodrigue@gmail.com">stephanied.rodrigue@gmail.com</a>	Stephanie	Rodrigue
<a href="mailto:vadam@gecinc.com">vadam@gecinc.com</a>		
<a href="mailto:kerryoriol@providenceeng.com">kerryoriol@providenceeng.com</a>	Kerry	Oriol
<a href="mailto:abyrne@consultssa.com">abyrne@consultssa.com</a>		
<a href="mailto:mayor@portallen.org">mayor@portallen.org</a>	Richard N., III	Lee
<a href="mailto:cazesmike@yahoo.com">cazesmike@yahoo.com</a>		
<a href="mailto:jason.manola@wbrCouncil.org">jason.manola@wbrCouncil.org</a>		
<a href="mailto:jsetze@crpla.org">jsetze@crpla.org</a>	James	Setze
<a href="mailto:info@abldla.com">info@abldla.com</a>		
<a href="mailto:boulangertree@gmail.com">boulangertree@gmail.com</a>		
<a href="mailto:ccole@cs.com">ccole@cs.com</a>		
<a href="mailto:dallas@super8.com">dallas@super8.com</a>		
<a href="mailto:riles@wlf.la.gov">riles@wlf.la.gov</a>		
<a href="mailto:bengt@fidelisinfra.com">bengt@fidelisinfra.com</a>		
<a href="mailto:kevin.steed@fidesconsulting.com">kevin.steed@fidesconsulting.com</a>		
<a href="mailto:andy.farris@fidesconsulting.com">andy.farris@fidesconsulting.com</a>		
<a href="mailto:jday@intrepid-equity.com">jday@intrepid-equity.com</a>		
<a href="mailto:la1south@aol.com">la1south@aol.com</a>		
<a href="mailto:wlandry@turner-industries.com">wlandry@turner-industries.com</a>		
<a href="mailto:stephen.d.pfeffer@usace.army.mil">stephen.d.pfeffer@usace.army.mil</a>		
<a href="mailto:lanceg@performance-contractors.com">lanceg@performance-contractors.com</a>		
<a href="mailto:murphy.foster@bswllp.com">murphy.foster@bswllp.com</a>		
<a href="mailto:sknrj@icloud.com">sknrj@icloud.com</a>		
<a href="mailto:redivincenti@gmail.com">redivincenti@gmail.com</a>		
<a href="mailto:david@divincentibrokerage.com">david@divincentibrokerage.com</a>		
<a href="mailto:hse018@legis.la.gov">hse018@legis.la.gov</a>		
<a href="mailto:tkent@turner-industries.com">tkent@turner-industries.com</a>		
<a href="mailto:amaheer@sunplusinc.com">amaheer@sunplusinc.com</a>		
<a href="mailto:tiffany@sunplusinc.com">tiffany@sunplusinc.com</a>		
<a href="mailto:wrobbins@stewartrobbins.com">wrobbins@stewartrobbins.com</a>		
<a href="mailto:info@thermaldyne.com">info@thermaldyne.com</a>		
<a href="mailto:l.vielee@landbtransport.com">l.vielee@landbtransport.com</a>		
<a href="mailto:kgiwoyn@upcontractor.up.com">kgiwoyn@upcontractor.up.com</a>		
<a href="mailto:8district-external@uscg.mil">8district-external@uscg.mil</a>		
<a href="mailto:curtis.ducote@wbrCouncil.org">curtis.ducote@wbrCouncil.org</a>		
<a href="mailto:ase@easterlylaw.com">ase@easterlylaw.com</a>		
<a href="mailto:lindahcrockett@gmail.com">lindahcrockett@gmail.com</a>		
<a href="mailto:john.harmon@cosaction.com">john.harmon@cosaction.com</a>		
<a href="mailto:cory.davis@volkert.com">cory.davis@volkert.com</a>	Cory Davis	
<a href="mailto:steveromano@email.com">steveromano@email.com</a>	Steve	Romano
<a href="mailto:dexter@civilsolutionscqi.com">dexter@civilsolutionscqi.com</a>	Eric	Dexter
<a href="mailto:risa@franklinassoc.com">risa@franklinassoc.com</a>	Risa	Mueller
<a href="mailto:joseph.cainsiii@stantec.com">joseph.cainsiii@stantec.com</a>	Joseph	Cains
<a href="mailto:cooltravel1739@yahoo.com">cooltravel1739@yahoo.com</a>	Kelly Blair	

<b>Email address</b>	<b>First name</b>	<b>Last name</b>
<a href="mailto:macks@legis.la.gov">macks@legis.la.gov</a>		
<a href="mailto:pricee@legis.la.gov">pricee@legis.la.gov</a>		
<a href="mailto:schexnayderc@legis.la.gov">schexnayderc@legis.la.gov</a>		
<a href="mailto:cortezp@legis.la.gov">cortezp@legis.la.gov</a>		
<a href="mailto:millsf@legis.la.gov">millsf@legis.la.gov</a>		
<a href="mailto:wardr@legis.la.gov">wardr@legis.la.gov</a>	Rick, III	Ward
<a href="mailto:liam.ford@iongroup.com">liam.ford@iongroup.com</a>	Liam	Ford



## Appendix G: Public Meeting Handout



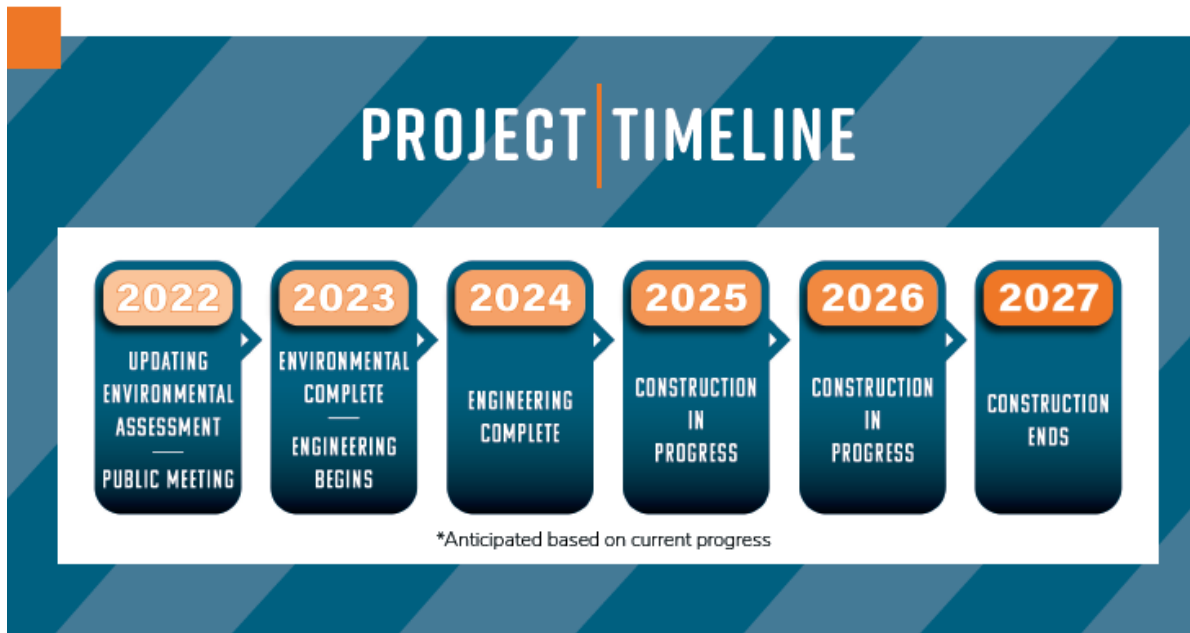
### THE LA 1/LA 415 CONNECTOR

The proposed project is a connector to link LA 1 with LA 415 at I-10 west of the Mississippi River Bridge, to include a new bridge over the Gulf Intracoastal Waterway.

#### CURRENT STATUS

For this effort, an Environmental Assessment was completed and a Finding of No Significant Impact (FONSI) was received in April 2007. This means the project was approved to be constructed. However, before funding could be secured, there were new developments in and adjacent to the proposed required right-of-way between 2007 and 2021. With development in the project area since 2007, DOTD is conducting a reevaluation of the Environmental documentation.

The project's purpose remains to provide system linkage in West Baton Rouge Parish. The need remains to provide a direct connection and evacuation route between LA 1 and LA 415 (to I-10). Establishing a direct connection between LA 1 and LA 415 provides a relief route for the congested local traffic as well as for evacuations.



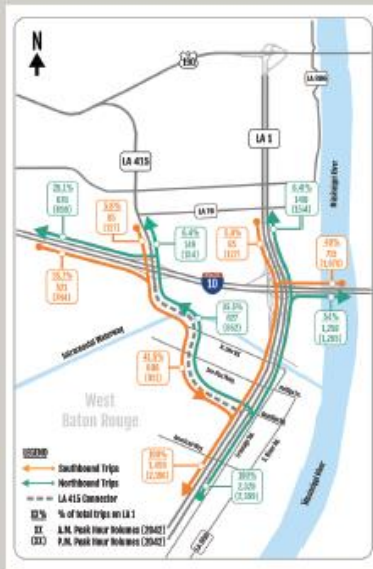
Handout distributed at November 16, 2022 Public Meeting, front page

# TONIGHT'S MEETING | NOVEMBER 16, 2022



Tonight's meeting is an open house-style public meeting. We recommend starting by watching the brief pre-recorded presentation on the Connector. Following the presentation, feel free to view the layout map of the proposed route, and to visit the exhibits displayed throughout the room. We encourage you to talk with the project team and to ask any questions that you may have. There will also be an opportunity to leave a comment before leaving the meeting; all comments will be considered.

## PROJECT DETAIL MAP




CONTACT US AT AT : 415connector@gmail.com

LEARN MORE AT :




*Handout distributed at November 16, 2022 Public Meeting, back page*

Appendix H: Public Meeting Sign In Sheets


		LA 1 to LA 415 Connector Public Meeting Wednesday, November 16, 2022 4 - 7 PM Addis Community Center		
FIRST NAME	LAST NAME	Email	Phone Number	Zip Code
Sven	Newhauser	sven.newhauser@fidelisinfra.com	225-274-5798	70810
Alice	Prambin	prambin@gmail.com	225-749-3642	70719
JENN	CRITES	jacrites@coxmail.com	225-205-2319	70767
MARIA	BARNARD Reid	maria.b.reid@oneatlas.com	225-235-3187	70800
Andrea	SNEARL	adsnearl@gmail.com	225-803-0903	70719
Thomas	Kreien		225-749-3425	70719
Janelle	Sewler	m.mam@cox.net	225-235-8110	70767
Chris	Kershaw	chriskershaw@brot.org	225-620-3479	70719
Erin	Dennett	Erin@ERBennett.com		70767
BINA	MOULTON	g.moulton@amec		
		moultonjina@yahoo.com	225 776 0	735
Joseph	Cains	joseph.cainsiii@stantec.com		
Todd	Berkelot	berkelot@gsis.com	225-408-0709	70764
Michael	VINCE	michael.vince2@gmail.com	225-620-6263	70767
Kendrea	Cains	mrs_cains_iii@stantec.com		

14


		<b>LA 1 to LA 415 Connector Public Meeting</b> Wednesday, November 16, 2022 4 - 7 PM Addis Community Center		
FIRST NAME	LAST NAME	Email	Phone Number	Zip Code
David	Shapiro	david.shapiro@deliasinfra.com	225-907-1427	70817
Gary	Joseph	wbr council.org	225 2730919	70767
Walter	LeBlanc	walterleblanc@bellkouth.net	225 413-4849	70719
Kadarian	Wilford	kadarian.wilford.critt@gmail.com	225 323 5765	70810
Robyn Evans	Evans	robyn.evans@frontdesk52900@gmail.com	225 960 7787	70767
Brenda Washington	Washington	bhw370519@yahoo.com	225-250-5836	70719
CHAD ORTIE	ORTIE	chadortie@gmail.com	225-933-5438	70501
Kara	Moree	karamoree@oneatlas.com	237 501 8211	70809
RAY	LeVeure	RKL2378@Bellsouth.net	225 776-1538	70710
Louise	Crachet	louise.crachet@ast.net	225-317-1062	70767
Revin	LeBlanc	revauleblanc@cox.net	225-963-0396	70710
Darren	Truhan	dtruhan@stor-service.com	225-413-9953	70767
Ramesh	Saunders	msaunders740@gmail.com	-	70767
Ricky	Critney	RLcritney@yahoo.com	225-266-5041	70710

14




		<b>LA 1 to LA 415 Connector Public Meeting</b> Wednesday, November 16, 2022 4 - 7 PM Addis Community Center		
FIRST NAME	LAST NAME	Email	Phone Number	Zip Code
Sharon	Williams	sharon@chambers.org	CHAMBER of	70767
Stephen	Rash	srash@walshgroup.com		
Andy	Farris	andy.farris@fidesconsulting.ca		70710
Linda	Crockett	linda.hcrockett@gmail.com		70767
Adam	Maher	amaher@sun-plus-inc.com	985-869-0018	70747
Kevin	Dueson	Kevin.Dueson@wblcouncil.org	225-336-2434	70767
Gerald	Butler	jaybutler54@gmail.com	225-270-7292	70719
Jeanne	Prejean	jprejean@yahoo.com	225-931-4384	70719
Bliss	Bernard	BBernard@adellisa.org	225-776-1007	70710
John	Caruso	cljpr@net2000.com	225-892-1592	70767
Aaron	DUPONT	ADUPONT@PRIM.COM	225-241-3032	70810
Matt	Milazzo	Matt.Milazzo@gmail.com	225-202-8734	70719
Bo	Bres	shoben.bres@gmail.com	708-209-7173	70719
Rabi	Colon	Rodm3@cup.net	225-931-5525	70719
Tricia	Manola	triciamanola@att.net	225-413-0271	70767
Jason	Manola	jason.mandola@wblcouncil.org	225-354-6592	70767


16

		<b>LA 1 to LA 415 Connector Public Meeting</b> Wednesday, November 16, 2022 4 - 7 PM Addis Community Center		<b>Elected Officials</b>
FIRST NAME	LAST NAME	Email	Phone Number	Organization
Riley	BEATHLOT	R.BEATHLOT@WBRCouncil.org	225-336-2403	WBR PARISH
David	TOUP	david@addisla.org	225-413-4798	Town of Addis
Chris	Kershaw	CHRIS@LaLeaktofo.com	620-3474	WBR PARISH
CALEB KIESELER	KIESELER		225-223-5322	WBR/SENATE

November 16, 2022, Public Meeting Sign In Sheet, Elected Officials, page 1 of 1

		LA 1 to LA 415 Connector Public Meeting Wednesday, November 16, 2022 4 - 7 PM Addis Community Center		Media
FIRST NAME	LAST NAME	Email	Phone Number	Organization
JOLIW	MOUTON	j.mouton@westsidejournal.com	225-325-3240	WESTSIDE JOURNAL


November 16, 2022, Public Meeting Sign In Sheet, Media, page 1 of 1

		<b>LA 1 to LA 415 Connector Public Meeting</b> Wednesday, November 16, 2022 4 - 7 PM Addis Community Center		<b>Agency</b>
FIRST NAME	LAST NAME	Email	Phone Number	Organization
Andrew	Santel			FA
Kent	Hopkins			FA
James	Paul			FA
John	Devall			FA
Kerry	Oriol	kerryoriol@providencery.com		Prw
Amy	Adams	amyadams@providencery.com		Prw
Mike	Paul	mpaul@trccompanies.com		TRC
DURK	KRONE	dkrone@trccompanies.com		TRC
Don	CLAYTON	DCLAYTON@TRCCOMPANIES.COM		TRC
McKaila	Stafford	mckaila.stafford@la.gov		DOTD
Michelle	Hanks	michelle.hanks@la.gov	242-4514	DOTD 28
Jacob	Dupre	jacob.dupre@la.gov		DOTD 28
Amy	JAC			FA
ASHLEY	LONG	ASHLEY.LONG@LA.GOV		DOTD 23
Cory	Landry	cory.landry@la.gov	225-379-1889	DOTD
Robin	Dziak	robin.dziak@la.gov		DOTD
Ari	Deitch	ari.deitch@arcadis.com	225-302-1660	Arcadis
Kiawasha	White	Kiawasha.White@la.gov	225-892-7103	DOTD
Duc	Ng	Duc.Ng@la.gov	225-375-1372	DOTD-ITS
Lucy	Kimberly	lucy.kimberly@la.gov	225-372-2528	DOTD-ITS
Paul	Mallett	paul.mallett@la.gov		

21

November 16, 2022, Public Meeting Sign In Sheet, Agency, page 1 of 2



		<b>LA 1 to LA 415 Connector Public Meeting</b> Wednesday, November 16, 2022 4 - 7 PM Addis Community Center		<b>Agency</b>
FIRST NAME	LAST NAME	Email	Phone Number	Organization
MOHAMMAD	NUR	mohammad.nur@LA.gov	225-379-1028	LADOTD
Joshua	Stutes	Joshua.Stutes@la.gov	225-231-4103	LADOTD
Eric	Kalivak	eric.kalivak@la.gov	225-379-1200	LA DOTD
DALTON	Williams	dalton.williams@la.gov	225-231-4101	LA DOTD
Jeff	Chatelain	jeffrey.chatelain@la.gov	225-638-6757	LADOTD
WEI	PENG	W.bi.peng@la.gov	225-379-1486	LADOTD
CHRIS	KNOTTS	chris.knotts@la.gov	225-379-1234	LADOTD
ANNA	HANKS	anna.hanks@la.gov	225-379-1726	LADOTD
MATT	ESTEPINAL	matt.estepinal@SSBGroup.com	225-368-7037	SSB
Tim	Brewer	tim.brewer@SSBGroup.com	601-750-3515	SSB
JAY	HARDMAN	JAY.HARDMAN@SSBGroup.com	225-342-1620	SSB
BRANDE	TONTENOT	Brandi@GISY.COM	337-501-8929	GIS
JACOB	LOESKE	JLOESKE@GISY.COM	985-665-2262	GIS

13

November 16, 2022, Public Meeting Sign In Sheet, Agency, page 2 of 2

Appendix I: Public Meeting Presentation  
Appendix I.1: Public Meeting Presentation Slides

**415 CONNECTOR**  
LA 1/LA 415 Connector Project  
SPR 11-0001-01

Wednesday, November 16, 2022  
4:00 – 7:00 PM  
Addis Community Center, Addis, LA

**Existing Conditions**

**Traffic Projections**

**Project History**

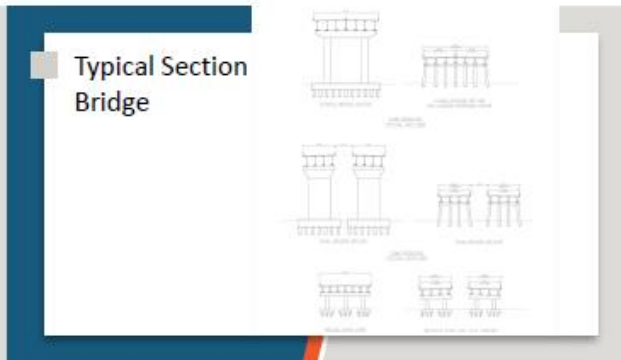
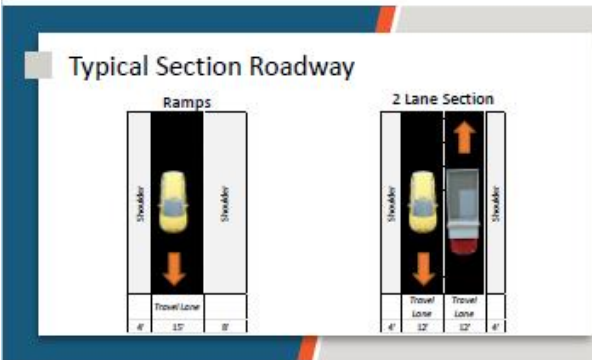
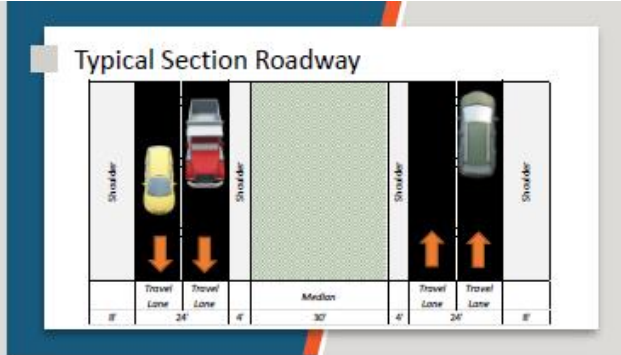
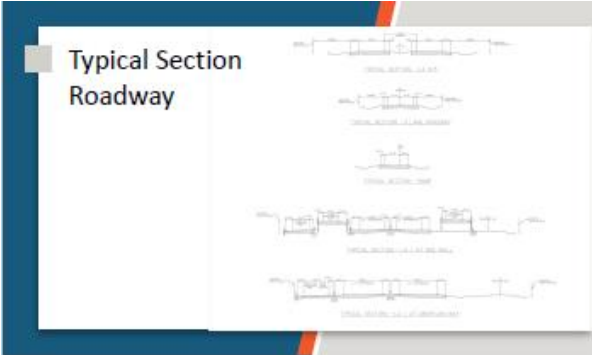
Legend  
- Prior Approved Route

**The Proposed LA 1/  
LA 415 Connector**

Legend  
- Current Proposed Route

**Project Purpose**

Legend  
- Current Proposed Route







EA  
Alternatives  
Comparison

EVALUATION FACTOR	YELLOW ALTERNATIVE (2007)	BLUE ALTERNATIVE (2022)
Acquired Right-of-Way (acres)	92.8	79.8
Nonqualifiable Crossings	2	2
Average Daily Traffic (ADT) for Connector in vehicles per day (VPD)	2010 ADT = 13,868	2042 ADT = 17,316
<b>Mitigations (Structure Impacts)</b>		
Residence	0	0
Commercial	4	2
Other	0	0
<b>Environmental Issue Considerations</b>		
Air Quality	None	None
Noise Impacts (Affected receptors)	3 Residences	3 Residences, 1 hotel/pool area
Water Quality	Low	Low
Wetlands (acres)	13.6	5.7
Woodlands (acres)	0.5	0
Farmland (acres)	85.0	53.6
Protected Species	None	None
Section 4(f) Reliance	None	None
Hazardous Materials/Waste Sites <sup>1</sup>	3	2
Cultural Resources	None	None
Aesthetic Impact	Low	Low

Anticipated Timeline



Right of Way Acquisition Information

- A Real Estate representative is here at the meeting to explain DOTD's right of way acquisition procedures.
- The DOTD Brochure explaining the Acquisition of Right of Way is available.
- If you have property affected by this project, we suggest you read the brochure carefully. If you have any questions regarding your individual situation, consult with the agent when he or she meets with you or contact the Region Real Estate Office.

Steps in the Right of Way Acquisition Process

DOTD's objective is to pay **Just Compensation** for all properties required for the project.

- Owners may be contacted by an appraiser(s) to evaluate their property.
- All evaluations will be approved by DOTD.
- After approval, a Real Estate agent will contact each property owner with a letter detailing DOTD's offer for the purchase of the property.
- Owners will be given a set timeframe to accept or counter DOTD's offer.

We want to hear from you!

- Sign-in to receive future project updates.
- Review all materials presented.
- Speak with project team members about your questions and concerns.
- Provide us with your comments by completing a comment card or emailing us at [415connector@gmail.com](mailto:415connector@gmail.com).



### What happens next

- Comment period ends November 28.
- Comments will be reviewed and considered.
- Completion of Environmental Assessment re-evaluation.
- With FHWA concurrence, the project can move forward into final design.
- Construction is presumed to begin in 2024.

### Other Capacity Improvements

These are separate projects with separate expectations and timelines.

- I-10 Widening [i10br.com](http://i10br.com)
- Mississippi River Bridge [mrbssouth.com](http://mrbssouth.com)



**Thank you for attending!**

This presentation will begin again shortly and will repeat throughout the meeting.



### Appendix I.2: Public Meeting Presentation Script

Slide 1: Welcome to the 415 Connector project public meeting. This meeting will provide information on the 415 Connector Project, which proposes to connect LA Highway 1 to LA Highway 415 to improve system linkage in West Baton Rouge Parish, within the Greater Baton Rouge region, and to provide direct connection and a relief route between the existing LA 1, Interstate 10 (I-10), and LA 415.

Slide 2: Currently, Eastbound traffic on Interstate 10, as well as southbound traffic on LA 415 is unable to head South towards Brusly, Addis, or Plaquemines without taking the LA 1 exit off of I-10. Similarly, north-bound traffic coming from LA 1 is unable to travel directly to LA 415. This forces traffic towards Interstate 10 near the Horace Wilkinson Bridge, and subjects travelers to the traffic congestion that frequently occurs in that area.

As it currently exists, LA 415 ends immediately South of Interstate 10, just North of the Gulf Intracoastal Waterway. Northbound traffic on LA 1 that is attempting to travel to I-10 West or LA -415 North is directed towards the LA-1/ I-10 interchange on the west end of the Horace Wilkinson Bridge. The LA 1/ LA 415 Connector will help to mitigate these concerns by connecting LA 415 at its current end point to LA 1 in south Port Allen.

Slide 3: Traffic modeling shows that this connector will reduce the volume of vehicles entering and exiting I-10 at LA 1. The modeling predicts that of the vehicles heading east on I-10 which currently take the LA 1 exit, approximately 40% will take the connector exit in future, prior to them reaching the LA 1 exit.

Based on the traffic modeling, approximately 35% of LA 1 northbound travelers would elect to use the connector rather than continue on LA 1. This shows sizable reductions in the volume of traffic entering and exiting I-10 at LA 1 in future with the creation of this connector.

Slide 4: The proposed project is a connector to link LA 1 with LA 415 at Interstate 10 (I-10) west of the Mississippi River Bridge, to include a new bridge over the Gulf Intracoastal Waterway (GIWW).

An Environmental Assessment (EA) was completed on the 415 Connector and a Finding of No Significant Impact (FONSI) was received in April 2007. The 2007 EA/FONSI recommended moving forward with a build alternative that included a four-lane, primarily at-grade, connector roadway with four-lane bridge over the GIWW referred to as Build Alternative 4 with LA 1 Intersection B. This means the project was approved to be constructed. However, before funding could be secured, there were new developments in and adjacent to the proposed required right-of-way (ROW) between 2007 and 2021. With development in the project area since 2007, DOTD is conducting a reevaluation of the Environmental Documentation.

Slide 5: With the reevaluation of the documentation, the need to adjust from the previously approved Yellow Route arose. A new alternative, the Blue Route, is proposed to fit current needs.

The proposed project is a connector roadway with bridge supporting four, 12-foot travel lanes with paved eight-foot outside and four-foot inside shoulders and a design speed of 45 miles per hour. The new bridge will support a 360-foot main span or spans over the GIWW with a vertical clearance of 73 feet above mean high water (MHW) and a horizontal clearance of 125 feet. A half diamond interchange is proposed with LA 1, with the potential to expand to a full diamond interchange in the future. Control of access (COA) associated with the LA 1 interchange necessitates construction of an access road. The access road will serve to provide access to/from LA 1 for COA affected businesses and residences between St. Titus Lane and Forest Drive on the west side of LA 1. The interchange at LA 415 and I-10 will remain a full diamond interchange. Modifications to this interchange include two through lanes and two left turn lanes in each direction from LA 415, resulting in the widening of the I-10 eastbound on ramp and I-10 westbound on ramp to two lanes each, and the I-10 eastbound and I-10 westbound off ramps to four lanes each.

To minimize impacts and improve access, the approved alignment shifted to the south with a roadway determined to be primarily elevated rather than at-grade. Additionally, the LA 415 interchange with I-10 has been modified to include additional turn lanes and the connection with LA 1 was shifted north along LA 1, providing a new access roadway just west of LA 1 for residents and businesses that would be affected by the control of access area. To provide maximum flexibility in design and meeting future traffic conditions, adequate additional ROW is proposed to allow for the bridge to be either a single structure or dual structures.

Slide 6: The project's purpose remains to provide system linkage in West Baton Rouge Parish within the Baton Rouge Metropolitan Area. The need remains to provide a direct connection between LA 1 and LA 415 (to I-10). As the only north-south roadway in West Baton Rouge Parish crossing the Gulf Intracoastal Waterway, LA 1 does not have sufficient capacity to meet existing demand. Establishing a direct connection between LA 1 and LA 415 (to I-10) provides a relief route for the congested local traffic, as well as for evacuations.

Slide 7: This slide presents typical roadway sections expected on the LA 1/ LA 415 Connector. The Connector will consist of four 12-foot travel lanes and paved eight-foot outside and four-foot inside shoulders with a 45 mile per hour design speed.

Ramps will consist of a 15 foot travel lane with paved eight-foot outside and four-foot inside shoulders, while 2 Lane Sections will consist of a 12 foot travel lane with paved four-foot outside shoulders.

Slide 8: This slide depicts typical roadway sections expected on the LA 1/ LA 415 Connector. The Connector will consist of four 12-foot travel lanes and paved eight-foot outside and four-foot inside shoulders with a 45 mile per hour design speed.

Slide 9: Ramps will consist of a 15 foot wide travel lane with paved eight-foot outside and four-foot inside shoulders.

2 Lane Sections of the Connector will consist of a 12 foot travel lane with paved four-foot outside shoulders.

Slide 10: This slide presents typical bridges sections for the LA 1/LA 415 Connector. The new bridge will support a 360-foot main span or spans over the Gulf Intracoastal Waterway.

Slide 11: This slide shows the interchange with LA 1, with the proposed roadway depicted in light blue and with crosshatched yellow lines indicate areas where pavement will be removed. The area towards the top of the screen is the west side of LA 1.

The interchange with the LA 415 Connector and LA 1 will consist of a half diamond interchange, with the potential to expand to a full diamond interchange in the future. Control of access associated with the LA 1 interchange will necessitate construction of an access road for affected businesses and residences between St. Titus Lane and Forest Drive on the west side of LA 1.

Slide 12: The light blue again depicts the proposed roadway, with the red depicted the raised bridge that will tie in the connector with LA 1.

Control of access associated with the LA 1 interchange necessitates construction of an access road. The access road will serve to provide access to/from LA 1 for COA affected businesses and residences between St. Titus Lane and Forest Drive on the west side of LA 1.

Slide 13: The interchange at LA 415 and I-10 will remain a full diamond interchange. Modifications to this interchange include two through lanes and two left turn lanes in each direction from LA 415, resulting in the widening of the I-10 eastbound on ramp and I-10 westbound on ramp to two lanes each. I-10 eastbound and I-10 westbound off ramps are to be widened to four lanes each.

Slide 14: This slide presents a comparison of the effects of the approved EA/FONSI Yellow Alternative with the currently proposed Blue Alternative that resulted from the alignment shift. As reflected in the table, overall project impacts have been reduced and anticipated traffic volumes have increased.

Slide 15: Following approval of the updated Environmental Assessment, Engineering will begin in 2023. This will include Architectural and Engineering design and bidding. We anticipate beginning construction on the connector in 2024 with an approximate three-year duration of actual construction. We anticipate completing construction on the Connector in 2027.

Slide 16: Should you own property that will be affected by this project, a Real Estate representative is present at tonight's meeting to explain DOTD's right of way acquisition procedures and can provide the DOTD Brochure explaining the Acquisition of Right of Way.

We recommend those who have property affected by this project speak with the representative and read the brochure carefully. If you have any questions regarding your individual situation, consult with the agent when he or she meets with you or contact the Region Real Estate Office.



Slide 17: DOTD's objective is to pay Just Compensation for all properties required for the project. An appraiser will contact property owners to evaluate their property.

All evaluations will be approved by DOTD. After DOTD approval, a Real Estate agent will contact each property owner with a letter detailing DOTD's offer and a timeframe to accept or counter DOTD's offer.

Slide 18: With that, we want to hear from you. Comment Cards are available at tonight's meeting, you can submit them tonight, or you can email them to [415connector@gmail.com](mailto:415connector@gmail.com), or mail them to the address printed on the card. Comments received or post marked by November 28 will be included in the transcript of tonight's meeting. All comments received will be taken into consideration. So tonight, be sure to sign-in to receive future project updates, review all materials presented, speak with project team members about your questions and concerns, and provide us with your comments.

Slide 19: At the conclusion of the comment period, the updated Environmental Assessment will be submitted for approval by FHWA. Engineering will take place in 2023, with construction expected to begin in 2024.

Slide 20: There two other local projects that are planned to improve traffic capacity in the area. The first of these is the I-10 Widening Project and the second is the creation of a new bridge over the Mississippi River in Iberville Parish. These projects are separate from the LA 1/ LA 415 Connector Project; questions or comments regarding these projects can be submitted on the contact page of each project's respective website, shown on this slide.

Construction of the Connector is currently expected to take place from 2024 to 2027. This will overlap with the work being done to widen I-10 (Segment 1 on the Baton Rouge side of the Mississippi River) from 2024 through 2026. We expect that traffic impacts to I-10 westbound due to the construction of the LA 1 to LA 415 Connector will be minimal.

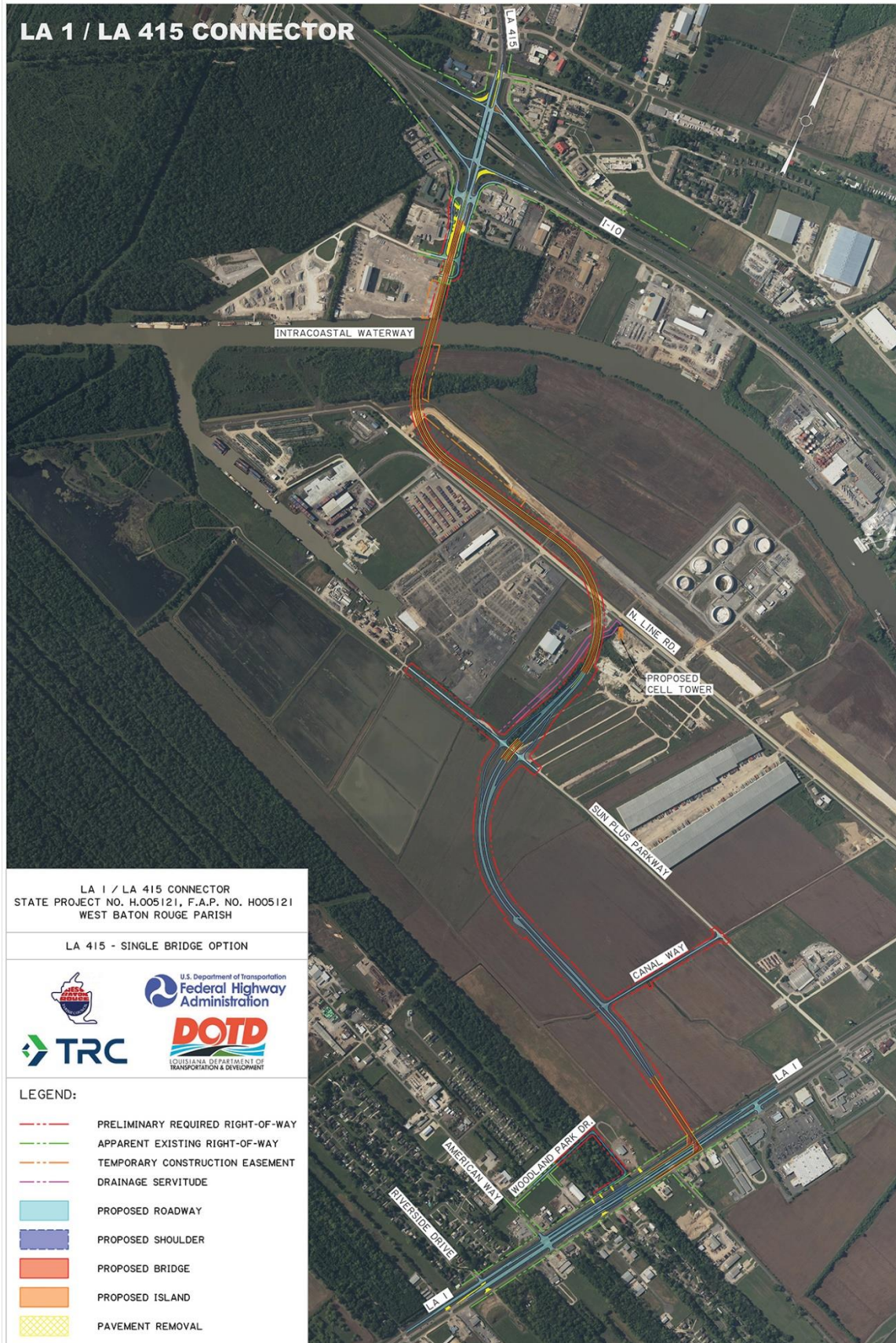
We do not anticipate an overlap between the time of construction of the LA 1/ LA 415 Connector and the time of construction of the new Mississippi River Bridge, which will be undergoing environmental review through 2024.

Slide 21: Thank you for your time! Please visit the other stations and interact with the project team. This presentation will begin again soon and repeat throughout the meeting.

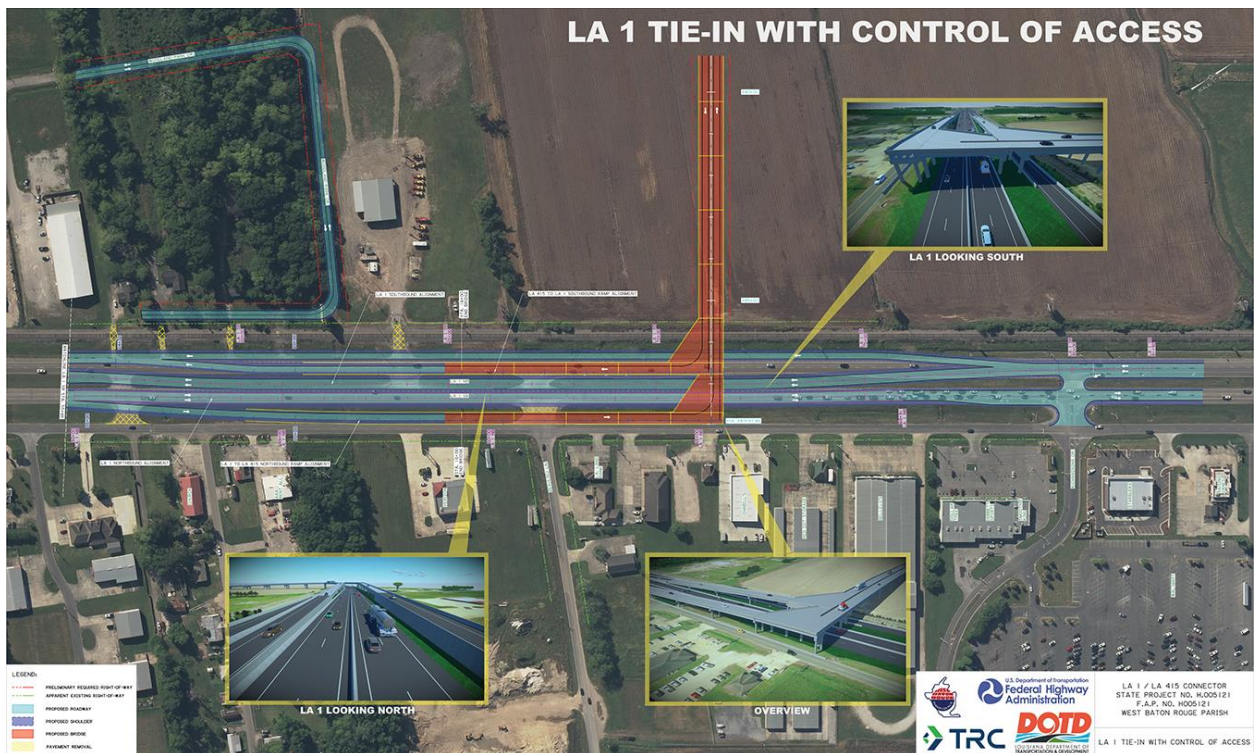
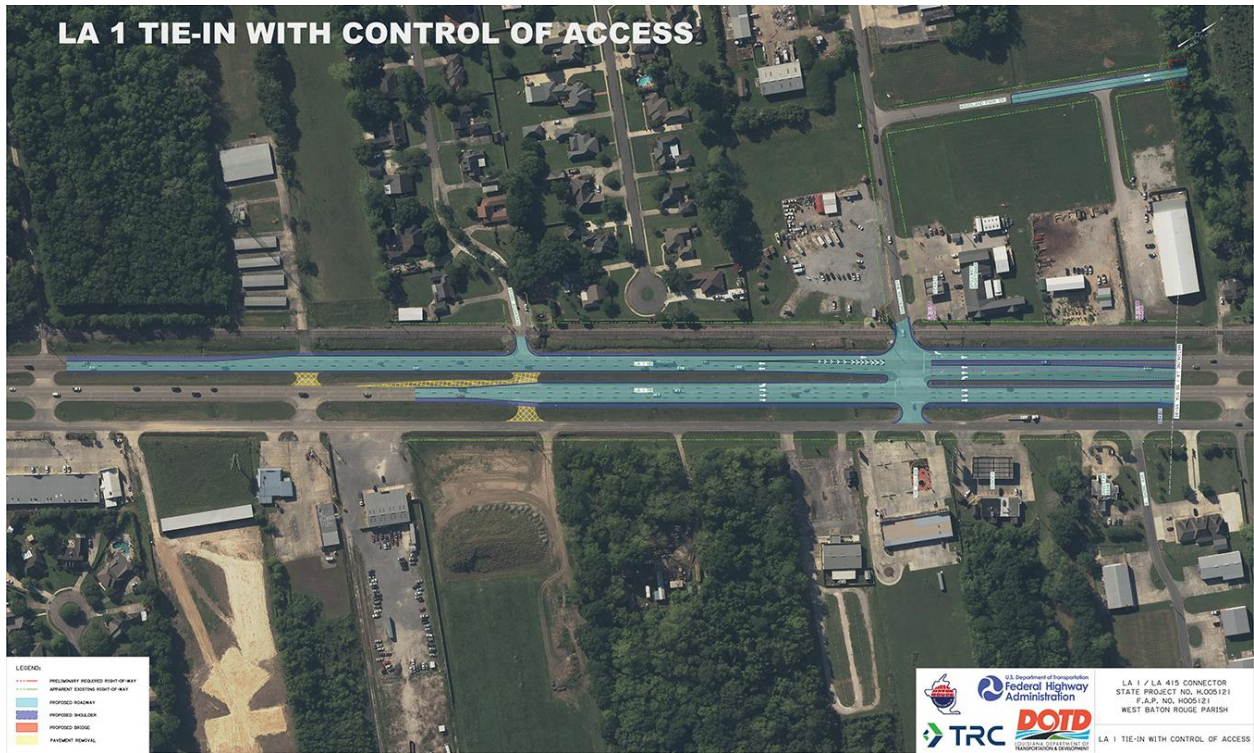
### Appendix J: Public Meeting Exhibits



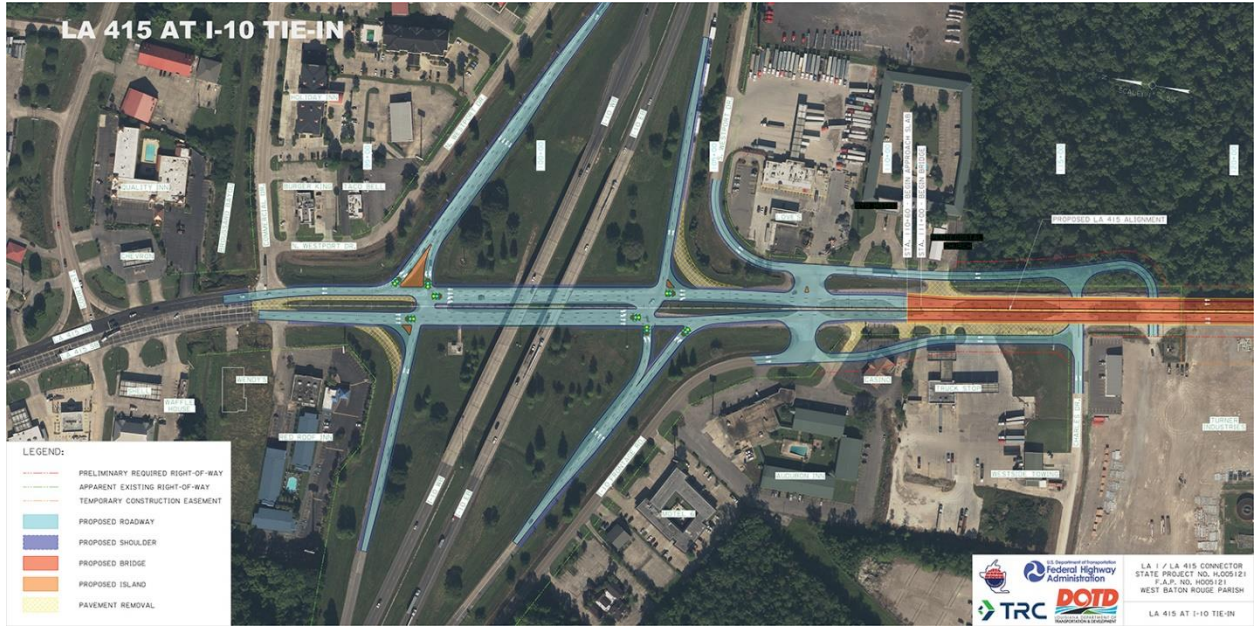


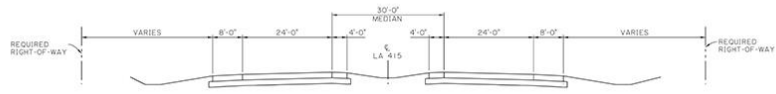




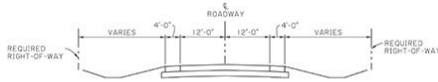




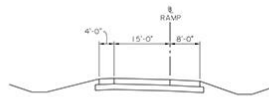




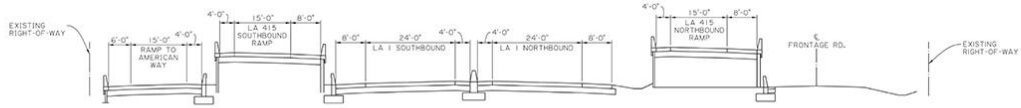
TYPICAL SECTION - LA 415



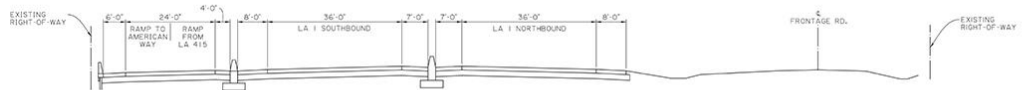
TYPICAL SECTION - 2 LANE ROADWAY



TYPICAL SECTION - RAMP



TYPICAL SECTION - LA 1 AT MSE WALL

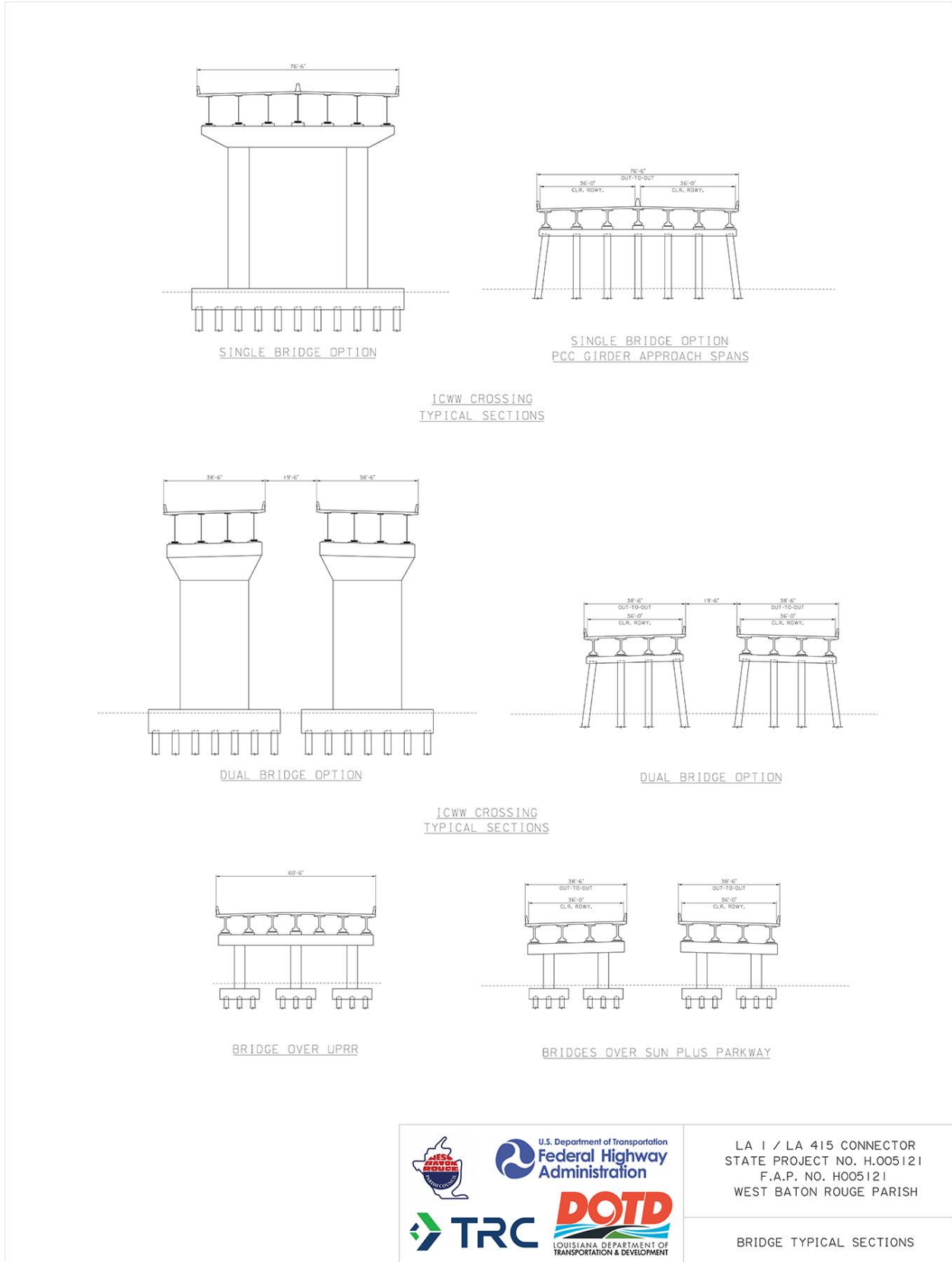


TYPICAL SECTION - LA 1 AT AMERICAN WAY



LA 1 / LA 415 CONNECTOR  
 STATE PROJECT NO. H.005121  
 F.A.P. NO. H005121  
 WEST BATON ROUGE PARISH

ROADWAY TYPICAL SECTIONS



U.S. Department of Transportation  
 Federal Highway Administration

TRC

DOTD  
 LOUISIANA DEPARTMENT OF TRANSPORTATION & DEVELOPMENT

LA 1 / LA 415 CONNECTOR  
 STATE PROJECT NO. H.005121  
 F.A.P. NO. H005121  
 WEST BATON ROUGE PARISH

---

BRIDGE TYPICAL SECTIONS

LA 1/LA 415 CONNECTOR		
EA/FONSI ALTERNATIVE AND CURRENT/BLUE ALTERNATIVE		
SUMMARY OF AFFECTS		
EVALUATION FACTOR	ALTERNATIVE 4 (2007)	BLUE ALTERNATIVE (2022)
Acquired Right-of-Way (acres)	97.9	79.8
Navigable Water Crossings	1	1
Average Daily Traffic (ADT) for Connector in vehicles per day (VPD)	2030 ADT =13,868	2042 ADT = 17,316
Relocations (structure impact)		
Residence	0	0
Commercial	6	2
Other	0	0
Environmental Justice Communities	None	None
Air Quality	None	None
Noise Impacts (affected receptors)	3 Residences	3 Residences, 1 hotel pool area
Water Quality	Low	Low
Wetlands (acres)	11.6	5.7
Floodplains (acres)	6.5	0
Farmland (acres)	85.0	53.4
Protected Species	None	None
Section 4(f) Resources	None	None
Hazardous Materials/Waste Sites <sup>1</sup>	3	2
Cultural Resources	None	None
Aesthetic Impact	Low	Low

Table Notes:

<sup>1</sup> Hazardous materials/waste sites include only those in or immediately adjacent to the ROW. There are three other sites that are in proximity to the ROW with outstanding concerns that warrant their inclusion in reporting, but are not expected to impact the project.







Appendix K.2: Summary Table of Comments

LA 1/ LA 415 CONNECTOR  
SPN H.005121  
EA REEVALUATION PUBLIC COMMENTS

DATE	COMMENTOR	COMMENT	RESPONSE
11/16/2022	Brenda Washington	Make the crossover from LA 1 to the 415 stretch a curving left instead of a straight left turn, a curving ramp I would imagine would allow traffic to flow much easier.	The visuals from the meeting do show a curving ramp on the angled structure. It is difficult to see since the structure is designed to accommodate future expansion. Adjustments to this transition will be considered during the design phase of the project.
11/16/2022	Kevin LeBlanc	The LA 1 exchange is a 90 degree turn, needs to be sweeping, traffic will need to slow too much and will cause backups. Please redesign.	The visuals from the meeting do show a curving ramp on the angled structure. It is difficult to see since the structure is designed to accommodate future expansion. Adjustments to this transition will be considered during the design phase of the project.
11/16/2022	Ray LeJeune	The 90 degree turns at the LA 1 connection will slow/stop traffic. A radius turn would allow better flow of traffic.	The visuals from the meeting do show a curving ramp on the angled structure. It is difficult to see since the structure is designed to accommodate future expansion. Adjustments to this transition will be considered during the design phase of the project.
		Riverside Subdivision will have issues closing the crossings. Forcing them south to make a U-turn will be a bad thing.	Residents of Riverside subdivision have the option to exit via American Way from Chatelain Drive or Oak Alley, which allows them to exit at a traffic signal and turn onto LA 1 northbound. Opting out of this option does require residents wishing to use northbound LA 1 to turn south and U-turn. Additionally, this modification is proposed to address safety concerns associated with the LA 415 ramp acceleration lane that extends through Riverside Drive.
11/16/2022	Bo Bres	I have been excited about the 415/1 Connection project but am very disappointed to see the proposed solution at the interchange of LA 1 in front of Walmart. What a strange awkward right angle solution! The connector needs smooth ramps that handle traffic onto connector ramps at speed. It is sad to see that the various constituencies can't see the benefit of working together that would create an infrastructure improvement that would benefit everyone.	The visuals from the meeting do show a curving ramp on the angled structure. It is difficult to see since the structure is designed to accommodate future expansion. Adjustments to this transition will be considered during the design phase of the project. It is noted that the interchange is south of the Walmart so that there is no traffic conflict with traffic entering and existing Walmart.
11/16/2022	Michael Vaughan	I would like to discuss the intersection on 415 near the interstate where the frontage round by Love's truck stop crosses 415.	Mr. Vaughan's comment was forwarded to LDOTD for a phone call to discuss any concerns at this location.
11/21/2022	A.E. Andy Farris, Jr.	I attended the 415 Connector meeting in Addis last week. We would like to get the 415 layout along the port rail to superimpose on our drawings please.	Mr. Farris was provided the link the meeting materials and forwarded the layout.
11/21/2022	Adam Maher	Would you mind sending a higher resolution version of the images posted to the LA 415 Connector webpage on DOTD's website. It's hard to make out the detail with the posted resolution. Specifically could you send images titled Roadway Typical Sections, Interchange with LA415-I10, EA Yellow and Blue, Entire Scope – Proposed Right of Way, Bridge Typical Sections, Interchange with LA 1-1 and Interchange with LA-2. I appreciate the assistance.	Mr. Maher was provided an response email providing the requested images (All exhibits from the public meeting attached in email).